



# WASHING

## NORMAL SPIN WASHERS LOW AND MEDIUM CAPACITY FWS-25 TP2



### FEATURES

#### Touch Plus Control

- 7" touchscreen, user friendly and totally programmable.
- Videos on display, ads, instructions.
- Free software for programming, telemetry, data analysis.
- USB Connection.
- 37 Languages.
- 8 dosing signals.

#### G FACTOR

- High G-Factor of 200.

#### EFFICIENCY

- Energy Optimization.
- Optimal load.
- Low water consumption.

#### VERSATILITY

- Custom- Make to order.
- OPL or COIN.
- Electric or Hot water.
- Wet cleaning features.

#### CONNECTIVITY

- IoT - Fagor-Konnnect standard.
- Remote technical service.
- Laundry Management system: OPL and COIN.

#### ERGONOMICS

- Biggest door diameter: Ø373.
- Modern lock for easy opening and closing of door

#### MAINTENANCE

- Hinged panel: for easy access to control panel parts.
- Technical setting: telemetry, error diagnosis, monitoring, software updates.

#### OTHERS

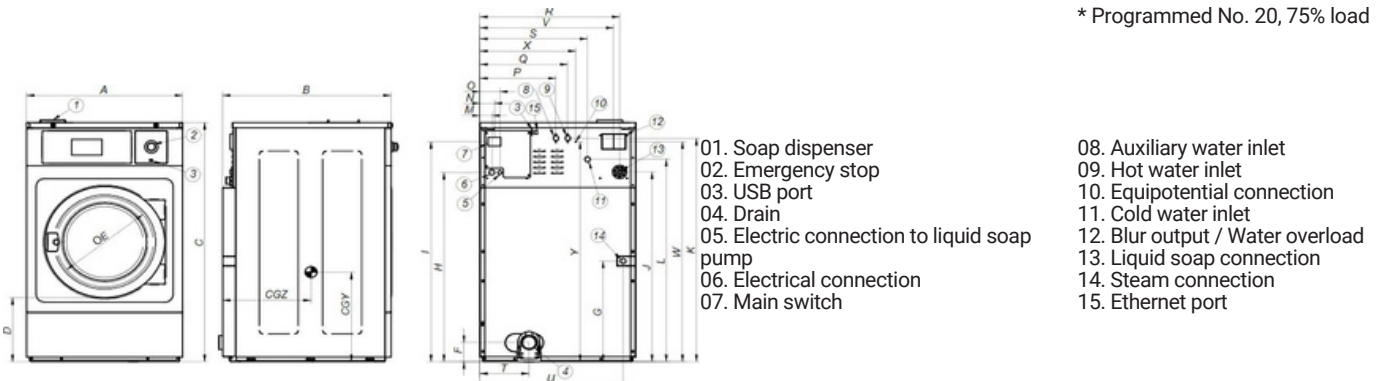
- Hard mounted washers.
- Anchoring to floor with anchoring base.
- Panels in skin plate.
- Drum and tub in stainless steel AISI 304
- 3 water inlets.
- CB and WRAS approved product Option ETL.

### OPTIONS

- DQ-2 Dosing pump kit.
- Extra dosing pump DB-1.
- SLUICE: model with 0.31 In drum holes.
- Anchoring base.
- External double drain 3".
- Water FULL FLOW: recirculation of bath water.
- Relay card with 6 extra dosing signals: up to 14 signals.
- Silicone gasket.
- Reversible door opening.
- Tropicalized coating.
- Steam kit to transform an E or HW heated machine into steam version.
- Stainless steel AISI 304 outer casing.
- Stainless steel AISI 304 front panel.
- Coin / token kit.
- Auto unlock kit for the door.

| DRUM                                    |              | U.           | FWS-25 TP2  |                   |
|---|--------------|--------------|-------------|-------------------|
| Load capacity                           | 1:9 / 1:10   | Lb.          | 24.3/22.1   |                   |
| Volume                                  |              | CU.FT        | 3.5         |                   |
| Diameter                                |              | In           | 24.4        |                   |
| Depth                                   |              | In           | 13          |                   |
| GENERAL DETAILS                         |              |              |             |                   |
| Washing speed / Spinning speed          |              | r.p.m.       | 53/759      |                   |
| G Factor                                |              | -            | 200         |                   |
| Maximum force transmitted               |              | KN           | 2,0 ±3      |                   |
| Frequency-dynamic force                 |              | Hz           | 8.93        |                   |
| Noise level                             |              | dB           | <70         |                   |
| Coin laundry version                    |              | -            | Yes         |                   |
| Double drain                            |              | -            | No          |                   |
| Weighing System / Tilting System        |              | -            | No          |                   |
| SLUICE option                           |              | -            | Yes         |                   |
| DOOR                                    |              |              |             |                   |
| Height center door / Height door        |              | In           | 22.5/12.2   |                   |
| Diameter                                |              | In           | 14.3        |                   |
| POWER                                   |              |              |             |                   |
| Motor                                   |              | Hp           | 1.5         |                   |
| Electric heating power                  |              | kW           | 6           |                   |
| Total electric power (electric model)   |              | kW           | 6.25        |                   |
| Total electric power (hw, steam model)  |              | kW           | 1.1         |                   |
| CONNECTIONS                             |              | ELECTRIC     |             | STEAM / HOT WATER |
| Voltage 208-240/60/1~ + G               | N° x AWG / A | 3 x 8 / 35A  |             | 3 x 14/ 15A       |
| Voltage 208-240/60/3~ + G               | N° x AWG / A | 4 x 12 / 20A |             | -                 |
| Voltage 440-480/3 ~ + G                 | N° x AWG / A | 4 x 14 / 15A |             | -                 |
| Steam inlet (Steam model)               | inch         | 1/2"         |             |                   |
| Maximum steam consumption (Steam model) | lbs/h        | 7            |             |                   |
| Water inlet                             | inch         | 3/4"         |             |                   |
| Water main pressure                     | Kg/cm2       | 2-4          |             |                   |
| Maximum water consumption               | Gal/h        | 16.2*        |             |                   |
| Drain                                   | mm/inch      | 3"           |             |                   |
| Drainage capacity                       | Gal/min      | 52.8         |             |                   |
| DIMENSIONS / PACKING DIMENSIONS         |              |              |             |                   |
| Net Width / Gross Width                 |              | In           | 28.3/30.8   |                   |
| Net Depth / Gross Depth                 |              | In           | 26.9/35.1   |                   |
| Net Height / Gross Height               |              | In           | 45.5/55.2   |                   |
| Net weight / Gross weight               |              | Lbs.         | 436.6/510.7 |                   |
| Volume                                  |              | Ft3          | 34.3        |                   |

\* Programmed No. 20, 75% load



|        | A  | B     | C     | D     | E     | F     | G    | H     | I     | J     | K     | L     | M     | N    | O    | P    | Q     | R     | S     | T     | U    | V     | W     | X     | Y     | CGY   | CGZ   |       |
|--------|----|-------|-------|-------|-------|-------|------|-------|-------|-------|-------|-------|-------|------|------|------|-------|-------|-------|-------|------|-------|-------|-------|-------|-------|-------|-------|
| FWS-25 | mm | 719   | 684   | 1158  | 310   | 373   | 144  | 440   | 886   | 1054  | 889   | 1073  | 958   | 61   | 74   | 101  | 316   | 376   | 637   | 475   | 211  | 654   | 607   | 1073  | 424   | 1118  | 383   | 511   |
|        | In | 28.31 | 26.93 | 45.59 | 12.20 | 14.69 | 5.67 | 17.32 | 34.88 | 41.50 | 35.00 | 42.24 | 37.72 | 2.40 | 2.91 | 3.98 | 12.44 | 14.80 | 25.08 | 18.70 | 8.31 | 25.75 | 23.90 | 42.24 | 16.69 | 44.02 | 15.08 | 20.12 |



# WASHING

## NORMAL SPIN WASHERS LOW AND MEDIUM CAPACITY FWS-30 TP2



### FEATURES

#### Touch Plus Control

- 7" touchscreen, user friendly and totally programmable.
- Videos on display, ads, instructions.
- Free software for programming, telemetry, data analysis.
- USB Connection.
- 37 Languages.
- 8 dosing signals.

#### G FACTOR

- High G-Factor of 200.

#### EFFICIENCY

- Energy Optimization.
- Optimal load.
- Low water consumption.

#### VERSATILITY

- Custom- Make to order.
- OPL or COIN.
- Electric or Hot water.
- Wet cleaning features.

#### CONNECTIVITY

- IoT - Fagor-Konnnect standard.
- Remote technical service.
- Laundry Management system: OPL and COIN.

#### ERGONOMICS

- Biggest door diameter: Ø373.
- Easy opening/closing system for door lock.

#### MAINTENANCE

- Hinged panel: for easy access to control panel parts.

Technical setting:

telemetry, error diagnosis, monitoring, software updates.

#### OTHERS

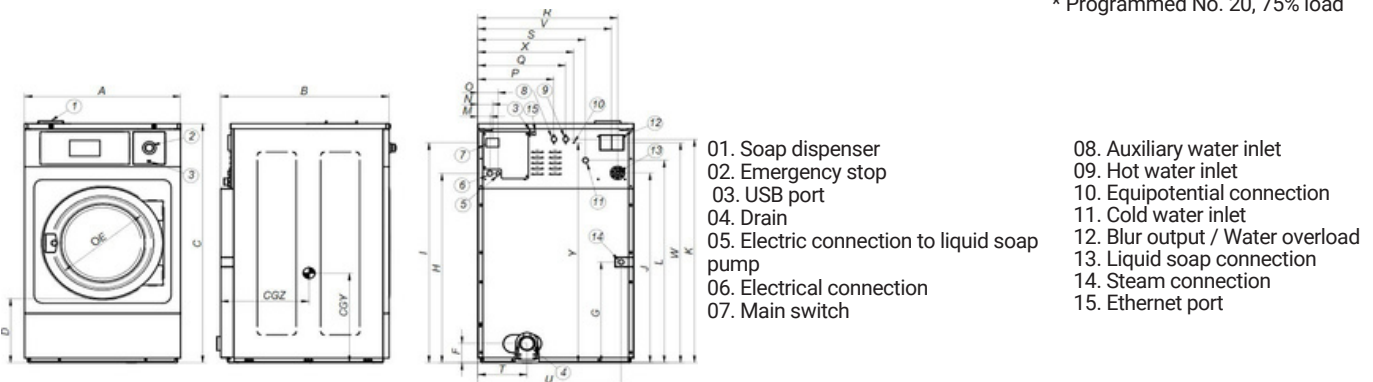
- Hard mounted washers.
- Anchoring to floor with anchoring base.
- Panels in skin plate.
- Drum and tub in stainless steel AISI 304
- 3 water inlets.
- CB and WRAS approved product Option ETL.

### OPTIONS

- DQ-2 Dosing pump kit.
- Extra dosing pump DB-1.
- SLUICE: model with 0.31 In drum holes.
- Anchoring base. • External double drain 3".
- Water FULL FLOW: recirculation of bath water.
- Relay card with 6 extra dosing signals: up to 14 signals.
- Silicone gasket.
- Reversible door opening.
- Tropicalized coating.
- Steam kit to transform an E or HW heated machine into steam version.
- Stainless steel AISI 304 outer casing.
- Stainless steel AISI 304 front panel.
- Coin / token kit.
- Auto unlock kit for the door.

| DRUM                                    |              | U.           | FWS - 30 TP2 |                   |
|---|--------------|--------------|--------------|-------------------|
| Load capacity                           | 1:9 / 1:10   | Lb.          | 30.9/28.7    |                   |
| Volume                                  |              | CU.FT        | 4.6          |                   |
| Diameter                                |              | In           | 24.4         |                   |
| Depth                                   |              | In           | 16.9         |                   |
| GENERAL DETAILS                         |              |              |              |                   |
| Washing speed / Spinning speed          |              | r.p.m.       | 53/759       |                   |
| G Factor                                |              | -            | 200          |                   |
| Maximum force transmitted               |              | KN           | 2.31 ±4      |                   |
| Frequency-dynamic force                 |              | Hz           | 8,93         |                   |
| Noise level                             |              | dB           | <70          |                   |
| Coin laundry version                    |              | -            | Yes          |                   |
| Double drain                            |              | -            | Opt.         |                   |
| Weighing System / Tilting System        |              | -            | No           |                   |
| SLUICE option                           |              | -            | Yes          |                   |
| DOOR                                    |              |              |              |                   |
| Height center door / Height door        |              | In           | 22.5/12.2    |                   |
| Diameter                                |              | In           | 14.7         |                   |
| POWER                                   |              |              |              |                   |
| Motor                                   |              | Hp           | 1.5          |                   |
| Electric heating power                  |              | kW           | 9            |                   |
| Total electric power (electric model)   |              | kW           | 9.5          |                   |
| Total electric power (hw, steam model)  |              | kW           | 1.1          |                   |
| CONNECTIONS                             |              | ELECTRIC     |              | STEAM / HOT WATER |
| Voltage 208-240/60/1~ + G               | Nº x AWG / A | 3 x 6 / 50A  |              | 3x 14 / 15A       |
| Voltage 208-240/60/3~ + G               | Nº x AWG / A | 4 x 10 / 32A |              | -                 |
| Voltage 440-480/3 ~ + G                 | Nº x AWG / A | 4 x 12 / 20A |              | -                 |
| Steam inlet (Steam model)               | inch         | 1/2"         |              |                   |
| Maximum steam consumption (Steam model) | lbs/h        | 8,5          |              |                   |
| Water inlet                             | inch         | 3/4"         |              |                   |
| Water main pressure                     | Kg/cm2       | 2-4          |              |                   |
| Maximum water consumption               | Gal/h        | 20,8*        |              |                   |
| Drain                                   | mm/inch      | 3"           |              |                   |
| Drainage capacity                       | Gal/min      | 52.8         |              |                   |
| DIMENSIONS / PACKING DIMENSIONS         |              |              |              |                   |
| Net Width / Gross Width                 |              | In           | 28.31/30.8   |                   |
| Net Depth / Gross Depth                 |              | In           | 33.70/39.0   |                   |
| Net Height / Gross Height               |              | In           | 45.87/55.2   |                   |
| Net weight / Gross weight               |              | Lbs.         | 463.1/540.2  |                   |
| Volume                                  |              | Ft3          | 38.1         |                   |

\* Programmed No. 20, 75% load



|        | A  | B     | C     | D     | E     | F     | G    | H     | I     | J     | K     | L     | M     | N    | O    | P    | Q     | R     | S     | T     | U    | V     | W     | X     | Y     | CGY   | CGZ   |       |
|--------|----|-------|-------|-------|-------|-------|------|-------|-------|-------|-------|-------|-------|------|------|------|-------|-------|-------|-------|------|-------|-------|-------|-------|-------|-------|-------|
| FWS-30 | mm | 719   | 856   | 1165  | 310   | 373   | 143  | 440   | 886   | 1.054 | 889   | 1073  | 958   | 61   | 74   | 101  | 316   | 376   | 637   | 475   | 211  | 654   | 607   | 1053  | 416   | 1053  | 484   | 524   |
|        | In | 28.31 | 33.70 | 45.87 | 12.20 | 14.69 | 5.83 | 17.32 | 34.88 | 41.50 | 35.00 | 42.24 | 37.72 | 2.40 | 2.91 | 3.98 | 12.44 | 14.80 | 25.08 | 18.70 | 8.31 | 25.75 | 23.90 | 41.46 | 16.38 | 41.46 | 19.06 | 20.63 |



# WASHING

## NORMAL SPIN WASHERS LOW AND MEDIUM CAPACITY FWS-40 TP2



### FEATURES

#### Touch Plus Control

- 7" touchscreen, user friendly and totally programmable.
- Videos on display, ads, instructions.
- Free software for programming, telemetry, data analysis.
- USB Connection.
- 37 Languages.
- 8 dosing signals.

#### G FACTOR

- G-FACTOR 200.

#### EFFICIENCY

- Energy Optimization.
- Optimal load.
- Low water consumption.

#### VERSATILITY

- Custom- Make to order.
- OPL or COIN.
- Electric or Hot water.
- Wet cleaning features.

#### CONNECTIVITY

- IoT - Fagor-Konnect standard.
- Remote technical service.
- Laundry Management system: OPL and COIN.

#### ERGONOMICS

- Large Loading doors: Ø460.
- Easy opening/closing system for door lock.

#### MAINTENANCE

- Hinged panel: easy access to parts.
- Equivalent parts for all models: contactors, electronic devices, gear.
- Technical menu: traceability, error diagnosis.

#### OTHERS

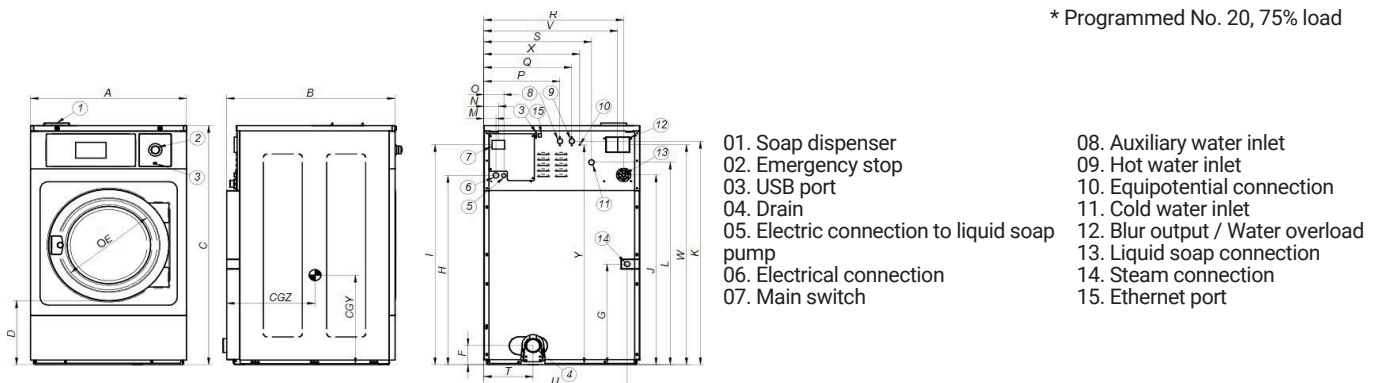
- Hard mounted washers.
- Anchoring to floor with anchoring base.
- Panels in skin plate.
- 3 water inlets.
- CB and WRAS approved.

### OPTIONS

- Extra dosing pump DB-1.
- Anchoring base.
- Double drain.
- Relay card with 6 extra dosing signals.
- Silicone gasket.
- Reversible door opening.
- Tropicalized coating.
- Stainless steel AISI 304 outer casing.
- Stainless steel AISI 304 front panel.
- Coin / token kit.
- Auto unlock kit for the door.

| DRUM                                    |              |              |                   |
|---|--------------|--------------|-------------------|
|   | U.           | FWS - 40 TP2 |                   |
| Load capacity 1:9 / 1:10                | Lb.          | 44.1/39.7    |                   |
| Volume                                  | CU.FT        | 6.5          |                   |
| Diameter                                | In           | 27.6         |                   |
| Depth                                   | In           | 18.5         |                   |
| GENERAL DETAILS                         |              |              |                   |
| Washing speed / Spinning speed          | r.p.m.       | 50/714       |                   |
| G Factor                                | -            | 200          |                   |
| Maximum force transmitted               | KN           | 2.63 ±5      |                   |
| Frequency-dynamic force                 | Hz           | 8.42         |                   |
| Noise level                             | dB           | <70          |                   |
| Coin laundry version                    | -            | Yes          |                   |
| Double drain                            | -            | Opt.         |                   |
| Weighing System / Tilting System        | -            | No           |                   |
| SLUICE option                           | -            | Yes          |                   |
| DOOR                                    |              |              |                   |
| Height center door / Height door        | In           | 25.8/13.7    |                   |
| Diameter                                | In           | 18.1         |                   |
| POWER                                   |              |              |                   |
| Motor                                   | Hp           | 3            |                   |
| Electric heating power                  | kW           | 12           |                   |
| Total electric power (electric model)   | kW           | 12.75        |                   |
| Total electric power (hw, steam model)  | kW           | 2.2          |                   |
| CONNECTIONS                             |              | ELECTRIC     | STEAM / HOT WATER |
| Voltage 208-240/60/1~ + G               | N° x AWG / A | 3 x 10 / 70A | 3 x 14 / 15A      |
| Voltage 208-240/60/3~ + G               | N° x AWG / A | 4 x 8 / 40A  | -                 |
| Voltage 440-480/3 ~ + G                 | N° x AWG / A | 4 x 10 / 30A | -                 |
| Steam inlet (Steam model)               | inch         | 1/2"         |                   |
| Maximum steam consumption (Steam model) | lbs/h        | 12           |                   |
| Water inlet                             | inch         | 3/4"         |                   |
| Water main pressure                     | Kg/cm2       | 2-4          |                   |
| Maximum water consumption               | Gal/h        | 31.7*        |                   |
| Drain                                   | mm/inch      | 3"           |                   |
| Drainage capacity                       | Gal/min      | 52.8         |                   |
| DIMENSIONS / PACKING DIMENSIONS         |              |              |                   |
| Net Width / Gross Width                 | In           | 31.02/33.5   |                   |
| Net Depth / Gross Depth                 | In           | 36.81/39.9   |                   |
| Net Height / Gross Height               | In           | 51.46/62.4   |                   |
| Net weight / Gross weight               | Lbs.         | 599.8/681.3  |                   |
| Volume                                  | Ft3          | 48           |                   |

\* Programmed No. 20, 75% load



|          | A  | B     | C     | D     | E     | F     | G    | H     | I     | J     | K     | L     | M     | N    | O    | P    | Q     | R     | S     | T     | U    | V     | W     | X     | Y     | CGY   | CGZ   |       |
|----------|----|-------|-------|-------|-------|-------|------|-------|-------|-------|-------|-------|-------|------|------|------|-------|-------|-------|-------|------|-------|-------|-------|-------|-------|-------|-------|
| FWS - 40 | mm | 788   | 935   | 1307  | 348   | 460   | 143  | 552   | 1035  | 1203  | 1038  | 1222  | 1107  | 61   | 74   | 101  | 385   | 445   | 706   | 544   | 245  | 724   | 676   | 1202  | 485   | 1202  | 479   | 546   |
|          | In | 31.02 | 36.81 | 51.46 | 13.70 | 18.11 | 5.63 | 21.73 | 40.75 | 47.36 | 40.87 | 48.11 | 43.58 | 2.40 | 2.91 | 3.98 | 15.16 | 17.52 | 27.80 | 21.42 | 9.65 | 28.50 | 26.61 | 47.32 | 19.09 | 47.32 | 18.86 | 21.50 |



# WASHING

## NORMAL SPIN WASHERS LOW AND MEDIUM CAPACITY FWS-50 TP2



### FEATURES

#### Touch Plus Control

- 7" touchscreen, user friendly and totally programmable.
- Videos on display, ads, instructions.
- Free software for programming, telemetry, data analysis.
- USB Connection.
- 37 Languages.
- 8 dosing signals.

#### G FACTOR

- G-FACTOR 200.

#### EFFICIENCY

- Energy Optimization.
- Optimal load.
- Low water consumption.

#### VERSATILITY

- Custom- Make to order.
- OPL or COIN.
- Electric or Hot water.
- Wet cleaning features.

#### CONNECTIVITY

- IoT - Fagor-Konnect standard.
- Remote technical service.
- Laundry Management system: OPL and COIN.

#### ERGONOMICS

- Biggest door diameter: Ø460.
- Easy opening/closing system for door lock.

#### MAINTENANCE

- Hinged panel: easy access to parts.
- Equivalent parts for all models: contactors, electronic devices, gear.
- Technical menu: traceability, error diagnosis.

#### OTHERS

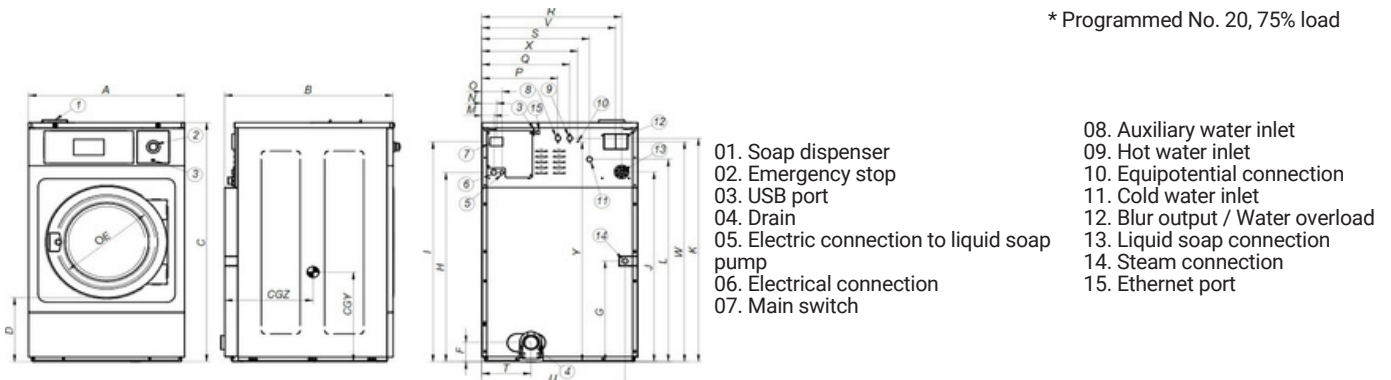
- Hard mounted washers.
- Anchoring to floor with anchoring base.
- Panels in skin plate.
- Drum and tub in stainless steel AISI 304
- 3 water inlets.
- CB and WRAS approved product Option ETL.

### OPTIONS

- DQ-2 Dosing pump kit.
- Extra dosing pump DB-1.
- SLUICE: model with 0.31 In drum holes.
- Anchoring base.
- Double drain.
- Water RE-CYCLE: recirculation of bath water.
- Relay card with 6 extra dosing signals: up to 14 signals.
- Silicone gasket.
- Reversible door opening.
- Tropicalized coating.
- Steam kit to transform an E or HW heated machine into steam version.
- Stainless steel AISI 304 outer casing.
- Stainless steel AISI 304 front panel.
- Coin / token kit.
- Auto unlock kit for the door.

| DRUM                                    |              | U.           | FWS-50 TP2  |                   |
|---|--------------|--------------|-------------|-------------------|
| Load capacity                           | 1:9 / 1:10   | Lb.          | 55.1/48.5   |                   |
| Volume                                  |              | CU.FT        | 7.8         |                   |
| Diameter                                |              | In           | 27.6        |                   |
| Depth                                   |              | In           | 22.1        |                   |
| GENERAL DETAILS                         |              |              |             |                   |
| Washing speed / Spinning speed          |              | r.p.m.       | 50/714      |                   |
| G Factor                                |              | -            | 200         |                   |
| Maximum force transmitted               |              | KN           | 3.04 ±5     |                   |
| Frequency-dynamic force                 |              | Hz           | 8.42        |                   |
| Noise level                             |              | dB           | <70         |                   |
| Coin laundry version                    |              | -            | Yes         |                   |
| Double drain                            |              | -            | Opt.        |                   |
| Weighing System / Tilting System        |              | -            | No          |                   |
| SLUICE option                           |              | -            | Yes         |                   |
| DOOR                                    |              |              |             |                   |
| Height center door / Height door        |              | In           | 25.8/13.7   |                   |
| Diameter                                |              | In           | 18.1        |                   |
| POWER                                   |              |              |             |                   |
| Motor                                   |              | Hp           | 3           |                   |
| Electric heating power                  |              | kW           | 12          |                   |
| Total electric power (electric model)   |              | kW           | 12.75       |                   |
| Total electric power (hw, steam model)  |              | kW           | 2.2         |                   |
| CONNECTIONS                             |              | ELECTRIC     |             | STEAM / HOT WATER |
| Voltage 208-240/60/1~ + G               | N° x AWG / A | 3 x 10 / 70A |             | 3 x 14 / 15A      |
| Voltage 230/3~ + G                      | N° x AWG / A | 4 x 8 / 40A  |             | -                 |
| Voltage 440-480/3 ~ + G                 | N° x AWG / A | 4 x 10 / 30A |             | -                 |
| Steam inlet (Steam model)               | inch         | 1/2"         |             |                   |
| Maximum steam consumption (Steam model) | lbs/h        | 12           |             |                   |
| Water inlet                             | inch         | 3/4"         |             |                   |
| Water main pressure                     | Kg/cm2       | 2-4          |             |                   |
| Maximum water consumption               | Gal/h        | 31.7*        |             |                   |
| Drain                                   | mm/inch      | 3"           |             |                   |
| Drainage capacity                       | Gal/min      | 52.8         |             |                   |
| DIMENSIONS / PACKING DIMENSIONS         |              |              |             |                   |
| Net Width / Gross Width                 |              | In           | 31.02/33.5  |                   |
| Net Depth / Gross Depth                 |              | In           | 40.75/43.6  |                   |
| Net Height / Gross Height               |              | In           | 51.46/62.4  |                   |
| Net weight / Gross weight               |              | Lbs.         | 650.5/738.7 |                   |
| Volume                                  |              | Ft3          | 53          |                   |

\* Programmed No. 20, 75% load



|        | A  | B     | C     | D     | E     | F     | G     | H     | I     | J     | K     | L     | M     | N    | O    | P    | Q     | R     | S     | T     | U    | V     | W     | X     | Y     | CGY   | CGZ   |       |
|--------|----|-------|-------|-------|-------|-------|-------|-------|-------|-------|-------|-------|-------|------|------|------|-------|-------|-------|-------|------|-------|-------|-------|-------|-------|-------|-------|
| FWS-50 | mm | 788   | 1035  | 1307  | 348   | 460   | 143   | 552   | 1035  | 1203  | 1038  | 1222  | 1107  | 61   | 74   | 101  | 385   | 445   | 706   | 544   | 245  | 724   | 676   | 1202  | 485   | 1202  | 479   | 586   |
|        | In | 31.02 | 40.75 | 51.46 | 13.70 | 18.11 | 53.63 | 21.73 | 40.75 | 47.36 | 40.87 | 48.11 | 43.58 | 2.40 | 2.91 | 3.98 | 15.16 | 17.52 | 27.80 | 21.42 | 9.65 | 28.50 | 26.61 | 47.32 | 19.09 | 47.32 | 18.86 | 23.07 |





# WASHING

## NORMAL SPIN WASHERS LOW AND MEDIUM CAPACITY FWS - 65 TP2



### FEATURES

#### Touch Plus Control

- 7" touchscreen, user friendly and totally programmable.
- Videos on display, ads, instructions.
- Free software for programming, telemetry, data analysis.
- USB Connection.
- 37 Languages.
- 8 dosing signals.

#### G FACTOR

- G-FACTOR 200.

#### EFFICIENCY

- Energy Optimization.
- Optimal load.
- Low water consumption.

#### VERSATILITY

- Custom- Make to order.
- OPL or COIN.
- Electric or Hot water.
- Wet cleaning features.

#### CONNECTIVITY

- IoT - Fagor-Konnect standard.
- Remote technical service.
- Laundry Management system: OPL and COIN.

#### ERGONOMICS

- Biggest door diameter: Ø460.
- Easy opening/closing system for door lock.

#### MAINTENANCE

- Hinged panel: easy and ergonomic access.
- Equivalent parts for all models: contactors, electronic devices,...
- Technical menu: telemetry, error diagnosis.

#### OTHERS

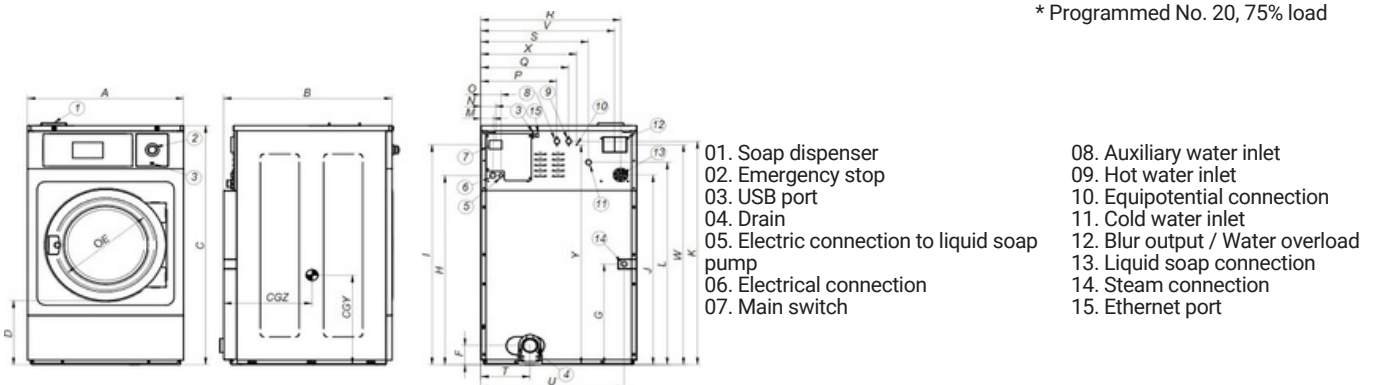
- Hard mounted washers.
- Anchoring to floor with anchoring base.
- Panels in skin plate.
- Drum and tub in stainless steel AISI 304
- 3 water inlets.
- CB and WRAS approved product Option ETL.

#### OPTIONS

- DQ-2 Dosing pump kit.
- Extra dosing pump DB-1.
- SLUICE: model with 0.31 In drum holes.
- Anchoring base.
- Double drain.
- Normally closed valve.
- Water RE-CYCLE: recirculation of bath water.
- Relay card with 6 extra dosing signals: up to 14 signals.
- Silicone gasket.
- Reversible door opening.
- Tropicalized coating.
- Steam kit to transform an E or HW heated machine into steam version.
- Stainless steel AISI 304 outer casing.
- Stainless steel AISI 304 front panel.
- Coin / token kit.
- Auto unlock kit for the door.

| DRUM                                    |              | U.          | FWS-65 TP2  |                   |
|---|--------------|-------------|-------------|-------------------|
| Load capacity                           | 1:9 / 1:10   | Lb.         | 68.4/61.7   |                   |
| Volume                                  |              | CU.FT       | 9.8         |                   |
| Diameter                                |              | In          | 30.3        |                   |
| Depth                                   |              | In          | 23          |                   |
| GENERAL DETAILS                         |              |             |             |                   |
| Washing speed / Spinning speed          |              | r.p.m.      | 48/682      |                   |
| G Factor                                |              | -           | 200         |                   |
| Maximum force transmitted               |              | KN          | 3,68 ± 6    |                   |
| Frequency-dynamic force                 |              | Hz          | 8,02        |                   |
| Noise level                             |              | dB          | <70         |                   |
| Coin laundry version                    |              | -           | Yes         |                   |
| Double drain                            |              | -           | Opt.        |                   |
| Weighing System / Tilting System        |              | -           | No          |                   |
| SLUICE option                           |              | -           | Yes         |                   |
| DOOR                                    |              |             |             |                   |
| Height center door / Height door        |              | In          | 27.6/15.8   |                   |
| Diameter                                |              | In          | 18.1        |                   |
| POWER                                   |              |             |             |                   |
| Motor                                   |              | Hp          | 5.4         |                   |
| Electric heating power                  |              | kW          | 18          |                   |
| Total electric power (electric model)   |              | kW          | 19.2        |                   |
| Total electric power (hw, steam model)  |              | kW          | 4           |                   |
| CONNECTIONS                             |              | ELECTRIC    |             | STEAM / HOT WATER |
| Voltage 208-240/60/1~ + G               | N° x AWG / A | -           |             | 3 x 12 / 20A      |
| Voltage 230/3~ + G                      | N° x AWG / A | 4 x 5 / 60A |             | 4 x 12 / 20A      |
| Voltage 440-480/3 ~ + G                 | N° x AWG / A | 4 x 8 / 40A |             | -                 |
| Steam inlet (Steam model)               | inch         | 3/4"        |             |                   |
| Maximum steam consumption (Steam model) | lbs/h        | 15          |             |                   |
| Water inlet                             | inch         | 3/4"        |             |                   |
| Water main pressure                     | Kg/cm2       | 2-4         |             |                   |
| Maximum water consumption               | Gal/h        | 43.5*       |             |                   |
| Drain                                   | mm/inch      | 3"          |             |                   |
| Drainage capacity                       | Gal/min      | 52.8        |             |                   |
| DIMENSIONS / PACKING DIMENSIONS         |              |             |             |                   |
| Net Width / Gross Width                 |              | In          | 34.80/37.2  |                   |
| Net Depth / Gross Depth                 |              | In          | 42.75/48.5  |                   |
| Net Height / Gross Height               |              | In          | 52.76/62.4  |                   |
| Net weight / Gross weight               |              | Lbs.        | 888.6/950.4 |                   |
| Volume                                  |              | Ft3         | 65          |                   |

\* Programmed No. 20, 75% load



|        | A  | B     | C     | D     | E     | F     | G    | H     | I     | J     | K     | L     | M     | N    | O    | P    | Q     | R     | S     | T     | U     | V     | W     | X     | Y     | CGY   | CGZ   |       |
|--------|----|-------|-------|-------|-------|-------|------|-------|-------|-------|-------|-------|-------|------|------|------|-------|-------|-------|-------|-------|-------|-------|-------|-------|-------|-------|-------|
| FWS-65 | mm | 884   | 1075  | 1340  | 400   | 460   | 149  | 548   | 1063  | 1230  | 1065  | 1250  | 1135  | 61   | 74   | 101  | 430   | 510   | 801   | 640   | 268   | 820   | 772   | 1220  | 570   | 1210  | 591   | 593   |
|        | In | 34.80 | 42.75 | 52.76 | 15.75 | 18.11 | 5.87 | 21.57 | 41.85 | 48.43 | 41.93 | 49.21 | 44.68 | 2.40 | 2.91 | 3.98 | 16.93 | 20.08 | 31.54 | 25.20 | 10.55 | 32.28 | 30.39 | 48.03 | 22.40 | 47.64 | 23.27 | 23.35 |



# WASHING

## NORMAL SPIN WASHERS LOW AND MEDIUM CAPACITY FWS-80C TP2

### FEATURES

#### Touch Plus Control

- 7" touchscreen, user friendly and totally programmable.
- Videos on display, ads, instructions.
- Free software for programming, telemetry, data analysis.
- USB Connection.
- 37 Languages.
- 8 dosing signals.

#### G FACTOR

- G-FACTOR 200.

#### EFFICIENCY

- Energy Optimization.
- Optimal load.
- Low water consumption.

#### VERSATILITY

- Custom- Make to order.
- OPL or COIN.
- Electric or Hot water.
- Wet cleaning features.

#### CONNECTIVITY

- IoT - Fagor-Konnect standard.
- Remote technical service.
- Laundry Management system: OPL and COIN.

#### ERGONOMICS

- Biggest door diameters: Ø560 (for FWS-80C/100C).
- Easy opening/closing system for door lock.

#### MAINTENANCE

- Hinged panel: easy access to parts.
- Equivalent parts for all models: contactors, electronic devices, gear.
- Technical menu: traceability, error diagnosis.

#### OTHERS

- Hard mounted washers.
- Anchoring to floor with anchoring base.
- Panels in skin plate.
- Drum and tub in stainless steel AISI 304
- 3 water inlets.
- CB and WRAS approved product Option ETL.

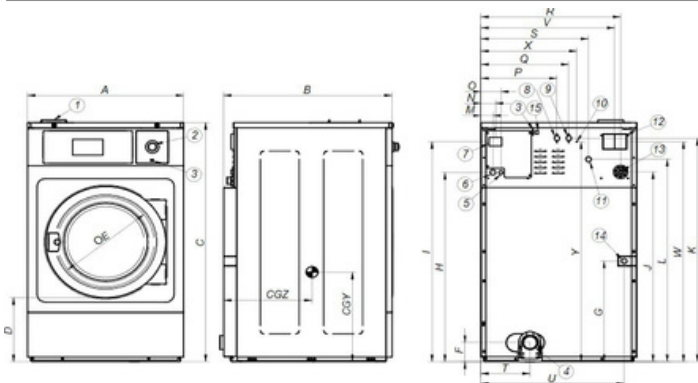
#### OPTIONS

- Double drain.
- Normally closed valve.
- Silicon gasket (for FWS-80).
- Water FULL FLOW recirculation of bath water.
- Relay card with 6 extra dosing signals: up to 14 signals.
- Printer.
- Reversible door opening.
- Tropicalized coating.
- Steam kit to transform an E or HW heated machine into steam version.
- Stainless steel outer casing.
- Stainless steel front panel.
- SLUICE: model with 0.31 In drum holes (for FWS-80C/100C).
- Anchoring base.
- Coin / token kit.
- Delayed door opening in case of power outage.



| DRUM                                    |              | U.          | FWS -80C TP2  |                   |
|---|--------------|-------------|---------------|-------------------|
| Load capacity                           | 1:9 / 1:10   | Lb.         | 86/77.2       |                   |
| Volume                                  |              | CU.FT       | 12.4          |                   |
| Diameter                                |              | In          | 33.9          |                   |
| Depth                                   |              | In          | 23.7          |                   |
| GENERAL DETAILS                         |              |             |               |                   |
| Washing speed / Spinning speed          |              | r.p.m.      | 45/644        |                   |
| G Factor                                |              | -           | 200           |                   |
| Maximum force transmitted               |              | KN          | 4,59 ±8       |                   |
| Frequency-dynamic force                 |              | Hz          | 7,58          |                   |
| Noise level                             |              | dB          | <70           |                   |
| Coin laundry version                    |              | -           | Yes           |                   |
| Double drain                            |              | -           | Opt.          |                   |
| Weighing System / Tilting System        |              | -           | No            |                   |
| SLUICE option                           |              | -           | Yes           |                   |
| DOOR                                    |              |             |               |                   |
| Height center door / Height door        |              | In          | 29/17.3       |                   |
| Diameter                                |              | In          | 22.1          |                   |
| POWER                                   |              |             |               |                   |
| Motor                                   |              | Hp          | 5.4           |                   |
| Electric heating power                  |              | kW          | 21            |                   |
| Total electric power (electric model)   |              | kW          | 22            |                   |
| Total electric power (hw, steam model)  |              | kW          | 4             |                   |
| CONNECTIONS                             |              | ELECTRIC    |               | STEAM / HOT WATER |
| Voltage 208-240/60/1~ + G               | N° x AWG / A | -           |               | 3 x 12 / 20A      |
| Voltage 230/3~ + G                      | N° x AWG / A | 4 x 6 / 70A |               | 4 x 12 / 20A      |
| Voltage 440-480/3 ~ + G                 | N° x AWG / A | 4 x 8 / 45A |               | -                 |
| Steam inlet (Steam model)               | inch         | 3/4"        |               |                   |
| Maximum steam consumption (Steam model) | lbs/h        | 18          |               |                   |
| Water inlet                             | inch         | 3/4"        |               |                   |
| Water main pressure                     | Kg/cm2       | 2-4         |               |                   |
| Maximum water consumption               | Gal/h        | 52.7*       |               |                   |
| Drain                                   | mm/inch      | 3"          |               |                   |
| Drainage capacity                       | Gal/min      | 52.8        |               |                   |
| DIMENSIONS / PACKING DIMENSIONS         |              |             |               |                   |
| Net Width / Gross Width                 |              | In          | 38.54/41.2    |                   |
| Net Depth / Gross Depth                 |              | In          | 45.47/50.4    |                   |
| Net Height / Gross Height               |              | In          | 55.55/65.2    |                   |
| Net weight / Gross weight               |              | Lbs.        | 1049.6/1124.6 |                   |
| Volume                                  |              | Ft3         | 77.7          |                   |

\* Programmed No. 20, 75% load



- 01. Soap dispenser
- 02. Emergency stop
- 03. USB port
- 04. Drain
- 05. Electric connection to liquid soap pump
- 06. Electrical connection
- 07. Main switch
- 08. Auxiliary water inlet
- 09. Hot water inlet
- 10. Equipotential connection
- 11. Cold water inlet
- 12. Blur output / Water overload
- 13. Liquid soap connection
- 14. Steam connection
- 15. Ethernet port

|         | A  | B     | C     | D     | E     | F     | G    | H     | I     | J     | K     | L     | M     | N    | O    | P    | Q     | R     | S     | T     | U     | V     | W     | X     | Y     | CGY   | CGZ   |       |
|---------|----|-------|-------|-------|-------|-------|------|-------|-------|-------|-------|-------|-------|------|------|------|-------|-------|-------|-------|-------|-------|-------|-------|-------|-------|-------|-------|
| FWS-80C | mm | 979   | 1155  | 1411  | 370   | 560   | 149  | 623   | 1139  | 1307  | 1116  | 1322  | 1211  | 61   | 74   | 101  | 545   | 625   | 885   | 715   | 262   | 917   | 855   | 1281  | 760   | 1373  | 635   | 682   |
|         | In | 38.54 | 45.47 | 55.55 | 14.57 | 22.05 | 5.87 | 24.53 | 44.84 | 51.46 | 43.94 | 52.05 | 47.68 | 2.40 | 2.91 | 3.98 | 21.45 | 24.61 | 34.84 | 28.15 | 36.10 | 32.72 | 33.66 | 24.57 | 29.92 | 54.06 | 26.85 | 26.85 |



# WASHING

## NORMAL SPIN WASHERS LOW AND MEDIUM CAPACITY FWS-100C TP2

### FEATURES

#### Touch Plus Control

- 7" touchscreen, user friendly and totally programmable.
- Videos on display, ads, instructions.
- Free software for programming, telemetry, data analysis.
- USB Connection.
- 37 Languages.
- 8 dosing signals.

#### G FACTOR

- G-FACTOR 200.

#### EFFICIENCY

- Energy Optimization.
- Optimal load.
- Low water consumption.

#### VERSATILITY

- Custom- Make to order.
- OPL or COIN.
- Electric or Hot water.
- Wet cleaning features.

#### CONNECTIVITY

- IoT - Fagor-Konnect standard.
- Remote technical service.
- Laundry Management system: OPL and COIN.

#### ERGONOMICS

- Biggest door diameter: Ø560 (for FWS-80C/100C).
- Easy opening/closing system for door lock.

#### MAINTENANCE

- Hinged panel: easy access to parts.
- Equivalent parts for all models: contactors, electronic devices, gear.
- Technical menu: traceability, error diagnosis.

#### OTHERS

- Hard mounted washers.
- Anchoring to floor with anchoring base.
- Panels in skin plate.
- Drum and tub in stainless steel AISI 304
- 3 water inlets.
- CB and WRAS approved product Option ETL.

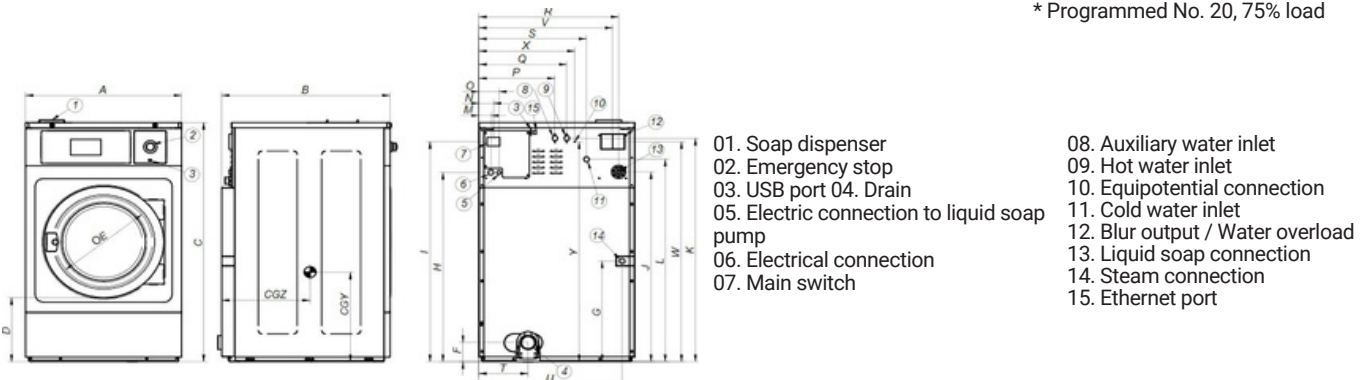
#### OPTIONS

- Double drain.
- Normally closed valve.
- Silicon gasket (for FWS-80).
- Water FULL FLOW recirculation of bath water.
- Relay card with 6 extra dosing signals: up to 14 signals.
- Printer.
- Reversible door opening.
- Tropicalized model: protected board.
- Steam kit to transform an E or HW heated machine into steam version.
- Stainless steel outer casing.
- Stainless steel front panel.
- SLUICE: model with 0.31 In drum holes (for FWS-80C/100C).
- Anchoring base.
- Coin / token kit.
- Delayed door opening in case of power outage.

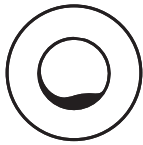


| DRUM                                    |              | U.          | FWS - 100C TP2 |                   |
|---|--------------|-------------|----------------|-------------------|
| Load capacity                           | 1:9 / 1:10   | Lb.         | 103.6/92.6     |                   |
| Volume                                  |              | CU.FT       | 15.9           |                   |
| Diameter                                |              | In          | 33.9           |                   |
| Depth                                   |              | In          | 28.4           |                   |
| GENERAL DETAILS                         |              |             |                |                   |
| Washing speed / Spinning speed          |              | r.p.m.      | 45/644         |                   |
| G Factor                                |              | -           | 200            |                   |
| Maximum force transmitted               |              | KN          | 5.9 ±8         |                   |
| Frequency-dynamic force                 |              | Hz          | 7.58           |                   |
| Noise level                             |              | dB          | <70            |                   |
| Coin laundry version                    |              | -           | Yes            |                   |
| Double drain                            |              | -           | Opt.           |                   |
| Weighing System / Tilting System        |              | -           | No             |                   |
| SLUICE option                           |              | -           | Yes            |                   |
| DOOR                                    |              |             |                |                   |
| Height center door / Height door        |              | In          | 29/17.3        |                   |
| Diameter                                |              | In          | 22.1           |                   |
| POWER                                   |              |             |                |                   |
| Motor                                   |              | Hp          | 8              |                   |
| Electric heating power                  |              | kW          | 21             |                   |
| Total electric power (electric model)   |              | kW          | 22             |                   |
| Total electric power (hw, steam model)  |              | kW          | 6              |                   |
| CONNECTIONS                             |              | ELECTRIC    |                | STEAM / HOT WATER |
| Voltage 208-240/60/1~ + G               | N° x AWG / A | -           |                | -                 |
| Voltage 230/3~ + G                      | N° x AWG / A | 4 x 6 / 70A |                | 4 x 10 / 30A      |
| Voltage 440-480/3 ~ + G                 | N° x AWG / A | 4 x 8 / 45A |                | 4 x 15 / 15A      |
| Steam inlet (Steam model)               | inch         | 3/4"        |                |                   |
| Maximum steam consumption (Steam model) | lbs/h        | 21          |                |                   |
| Water inlet                             | inch         | 3/4"        |                |                   |
| Water main pressure                     | Kg/cm2       | 2-4         |                |                   |
| Maximum water consumption               | Gal/h        | 67.7*       |                |                   |
| Drain                                   | mm/inch      | 3"          |                |                   |
| Drainage capacity                       | Gal/min      | 52.8        |                |                   |
| DIMENSIONS / PACKING DIMENSIONS         |              |             |                |                   |
| Net Width / Gross Width                 |              | In          | 38.54/44.3     |                   |
| Net Depth / Gross Depth                 |              | In          | 52.17/56.7     |                   |
| Net Height / Gross Height               |              | In          | 55.55/64.6     |                   |
| Net weight / Gross weight               |              | Lbs.        | 1323/1477.4    |                   |
| Volume                                  |              | Ft3         | 91.8           |                   |

\* Programmed No. 20, 75% load



|            | A  | B     | C     | D     | E     | F     | G    | H     | I     | J     | K     | L     | M     | N    | O    | P    | Q     | R     | S     | T     | U     | V     | W     | X     | Y     | CGY   | CGZ   |       |
|------------|----|-------|-------|-------|-------|-------|------|-------|-------|-------|-------|-------|-------|------|------|------|-------|-------|-------|-------|-------|-------|-------|-------|-------|-------|-------|-------|
| FWS - 100C | mm | 979   | 1325  | 1411  | 370   | 560   | 154  | 623   | 1139  | 1307  | 1116  | 1322  | 1211  | 61   | 74   | 101  | 545   | 625   | 885   | 715   | 262   | 917   | 855   | 1281  | 760   | 1373  | 635   | 760   |
|            | In | 38.54 | 52.17 | 55.55 | 14.57 | 22.05 | 6.06 | 24.53 | 44.84 | 51.46 | 43.94 | 52.05 | 47.68 | 2.40 | 2.91 | 3.98 | 21.46 | 24.61 | 34.85 | 28.15 | 10.31 | 36.10 | 33.66 | 50.43 | 29.92 | 54.06 | 25.00 | 29.92 |



# WASHING

## NORMAL SPIN WASHER EXTRACTORS HIGH CAPACITY FWS-135C TP2



### FEATURES

#### Touch Plus Control

- 7" touchscreen, user friendly and totally programmable.
- Videos on display, ads, instructions.
- Free software for programming, telemetry, data analysis.
- USB Connection.
- 37 Languages.
- 8 dosing signals.

#### G FACTOR

- High G-Factor 150.

#### EFFICIENCY

- Energy Optimization.
- Optimal load.
- Low water consumption.

#### VERSATILITY

- Custom- Make to order.
- OPL or COIN.
- Electric or Hot water.
- Wet cleaning features.

#### CONNECTIVITY

- IoT - Fagor-Konnect standard.
- Remote technical service.
- Laundry Management system: OPL and COIN.

#### ERGONOMICS

- Large Loading Doors: Ø 560 mm.
- Easy opening/closing system for door lock.

#### MAINTENANCE

- Hinged panel: easy and ergonomic access.
- Equivalent parts for all models: contactors, electronic devices,...
- Technical menu: telemetry, error diagnosis.

#### OTHERS

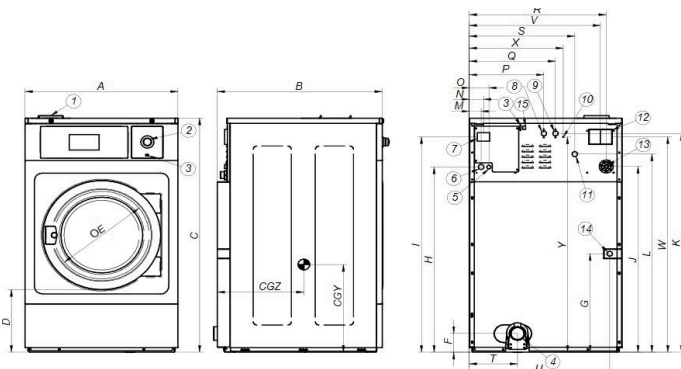
- Hard mounted washers.
- Anchoring to floor with anchoring base.
- Panels in skin plate.
- 3 water inlets (Water inlet hoses not included).
- CB and WRAS approved.

### OPTIONS

- Extra dosing pump DB-1.
- Anchoring base.
- Double drain.
- Water inlet hose.
- Relay card with 6 extra dosing signals.
- Reversible door opening.
- Tropicalized coating.
- Stainless steel AISI 304 outer casing.
- Stainless steel AISI 304 front panel.
- Coin / token kit.
- Auto unlock kit for the door.
- Stainless steel AISI 304 outer casing.
- Front soap dispenser.

| DRUM                                    |            | U.           | FWS - 135C TP2 |                   |
|---|------------|--------------|----------------|-------------------|
| Load capacity                           | 1:9 / 1:10 | Lb.          | 143.3 / 130.1  |                   |
| Volume                                  |            | CU.FT        | 21.2           |                   |
| Diameter                                |            | In           | 41.3           |                   |
| Depth                                   |            | In           | 26.9           |                   |
| GENERAL DETAILS                         |            |              |                |                   |
| Washing speed / Spinning speed          |            | r.p.m.       | 42,5 / 505     |                   |
| G Factor                                |            | -            | 150            |                   |
| Maximum force transmitted               |            | KN           | 9.12 ±15       |                   |
| Frequency-dynamic force                 |            | Hz           | 6.93           |                   |
| Noise level                             |            | dB           | < 70           |                   |
| Coin laundry version                    |            | -            | YES            |                   |
| Double drain                            |            | -            | OPT.           |                   |
| Weighing System / Tilting System        |            | -            | NO             |                   |
| SLUICE option                           |            | -            | YES            |                   |
| DOOR                                    |            |              |                |                   |
| Height center door / Height door        |            | In           | 35.5 / 21.3    |                   |
| Diameter                                |            | In           | 22.1           |                   |
| POWER                                   |            |              |                |                   |
| Motor                                   |            | Hp           | 7.4            |                   |
| Electric heating power                  |            | kW           | 36             |                   |
| Total electric power (electric model)   |            | kW           | 38             |                   |
| Total electric power (hw, steam model)  |            | kW           | 5.5            |                   |
| CONNECTIONS                             |            |              | ELECTRIC       | STEAM / HOT WATER |
| Voltage 208-240/60/1~ + G               |            | Nº x AWG / A | -              | -                 |
| Voltage 230/3~ + G                      |            | Nº x AWG / A | 4x 2 / 125A    | 4x 8 / 50A        |
| Voltage 440-480/3 ~ + G                 |            | Nº x AWG / A | 4x 6 / 70A     | 4x 10/30A         |
| Steam inlet (Steam model)               |            | inch         | 3/4"           |                   |
| Maximum steam consumption (Steam model) |            | lbs/h        | 21             |                   |
| Water inlet                             |            | inch         | 1"             |                   |
| Water main pressure                     |            | Kg/cm2       | 2-4            |                   |
| Maximum water consumption               |            | Gal/h        | 165.8**        |                   |
| Drain                                   |            | mm/inch      | 3"             |                   |
| Drainage capacity                       |            | Gal/min      | 200            |                   |
| DIMENSIONS / PACKING DIMENSIONS         |            |              |                |                   |
| Net Width / Gross Width                 |            | In           | 48.23 / 52.6   |                   |
| Net Depth / Gross Depth                 |            | In           | 57.77/ 56.7    |                   |
| Net Height / Gross Height               |            | In           | 64.57 / 73.3   |                   |
| Net weight / Gross weight               |            | Lbs.         | 1746.4 / 1936  |                   |
| Volume                                  |            | Ft3          | 145.5          |                   |

\* Programmed No. 2, 100% load



- 01. Soap dispenser
- 02. Emergency stop
- 03. USB port
- 04. Drain
- 05. Electric connection to liquid soap pump
- 06. Electrical connection
- 07. Main switch
- 08. Auxiliary water inlet
- 09. Hot water inlet
- 10. Equipotential connection
- 11. Cold water inlet
- 12. Blur output / Water overload
- 13. Liquid soap connection
- 14. Steam connection
- 15. Ethernet port

|          | A  | B     | C     | D     | E     | F     | G    | H     | I     | J     | K     | L     | M    | N    | O    | P    | Q     | R     | S     | T     | U     | V     | W     | X     | Y     | CGY   | CGZ   |       |
|----------|----|-------|-------|-------|-------|-------|------|-------|-------|-------|-------|-------|------|------|------|------|-------|-------|-------|-------|-------|-------|-------|-------|-------|-------|-------|-------|
| FWS-135C | mm | 1225  | 1315  | 1640  | 540   | 560   | 115  | 984   | 1368  | 1536  | 1306  | 1551  | 1318 | 61   | 74   | 101  | 651   | 731   | 1110  | 869   | 318   | 1163  | 1080  | 1470  | 992   | 1595  | 644   | 972   |
|          | In | 48.23 | 51.77 | 64.57 | 21.26 | 22.05 | 4.53 | 38.74 | 53.86 | 60.47 | 51.42 | 61.65 | 1.89 | 2.40 | 2.91 | 3.98 | 25.63 | 28.78 | 43.70 | 34.21 | 12.52 | 45.79 | 42.52 | 57.87 | 39.06 | 62.80 | 25.35 | 38.27 |





# WASHING

## NORMAL SPIN WASHER EXTRACTORS HIGH CAPACITY FWS-180C TP2



### FEATURES

#### Touch Plus Control

- 7" touchscreen, user friendly and totally programmable.
- Videos on display, ads, instructions.
- Free software for programming, telemetry, data analysis.
- USB Connection.
- 37 Languages.
- 8 dosing signals.

#### G FACTOR

- High G-Factor 150.

#### EFFICIENCY

- Energy Optimization.
- Optimal load.
- Low water consumption.

#### VERSATILITY

- Custom- Make to order.
- OPL or COIN.
- Electric or Hot water.
- Wet cleaning features.

#### CONNECTIVITY

- IoT - Fagor-Konnect standard.
- Remote technical service.
- Laundry Management system: OPL and COIN.

#### ERGONOMICS

- Big door diameter: Ø 560.
- Easy opening/closing system for door lock.

#### MAINTENANCE

- Hinged panel: easy and ergonomic access.
- Equivalent parts for all models: contactors, electronic devices,...
- Technical menu: telemetry, error diagnosis.

#### OTHERS

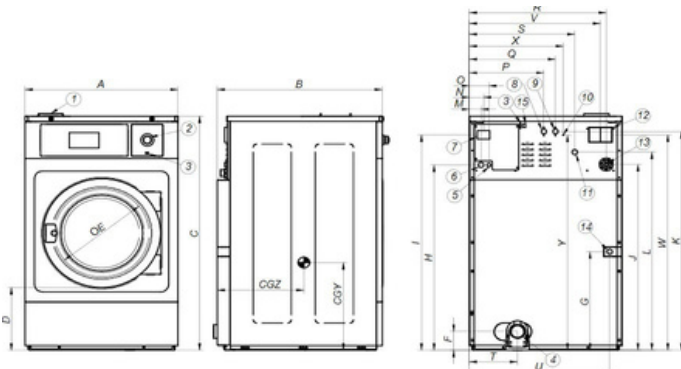
- Hard mounted washers.
- Anchoring to floor with anchoring base.
- Panels in skin plate.
- Drum and tub in stainless steel AISI 304.
- 3 water inlets (Water inlet hoses not included).
- CB and WRAS approved product Option ETL.

#### OPTIONS

- DQ-2 Dosing pump kit.
- Extra dosing pump DB-1.
- SLUICE: model with 0.31 In drum holes.
- Anchoring base.
- Double drain.
- Water inlet hose.
- Relay card with 6 extra dosing signals: up to 14 signals.
- Reversible door opening.
- Tropicalized coating.
- Steam kit to transform an E or HW heated machine into steam version.
- Stainless steel AISI 304 outer casing.
- Stainless steel AISI 304 front panel.
- Coin / token kit.
- Auto unlock kit for the door.
- Stainless steel AISI 304 outer casing.
- Front soap dispenser.

| DRUM                                    |              | U.          | FWS - 180C TP2    |
|---|--------------|-------------|-------------------|
| Load capacity 1:9 / 1:10                |              | Lb.         | 187.4/169.8       |
| Volume                                  |              | CU.FT       | 28.2              |
| Diameter                                |              | In          | 41.3              |
| Depth                                   |              | In          | 36.9              |
| GENERAL DETAILS                         |              |             |                   |
| Washing speed / Spinning speed          |              | r.p.m.      | 42.5 / 505        |
| G Factor                                |              | -           | 150               |
| Maximum force transmitted               |              | KN          | 10.17 ±15         |
| Frequency-dynamic force                 |              | Hz          | 6.93              |
| Noise level                             |              | dB          | < 70              |
| Coin laundry version                    |              | -           | YES               |
| Double drain                            |              | -           | OPT.              |
| Weighing System / Tilting System        |              | -           | NO                |
| SLUICE option                           |              | -           | YES               |
| DOOR                                    |              |             |                   |
| Height center door / Height door        |              | In          | 35.5 / 21.3       |
| Diameter                                |              | In          | 22.1              |
| POWER                                   |              |             |                   |
| Motor                                   |              | Hp          | 7.4               |
| Electric heating power                  |              | kW          | 48/36***          |
| Total electric power (electric model)   |              | kW          | 50.5/38.5***      |
| Total electric power (hw, steam model)  |              | kW          | 7.5               |
| CONNECTIONS                             |              | ELECTRIC    | STEAM / HOT WATER |
| Voltage 208-240/60/1~ + G               | N° x AWG / A | -           | -                 |
| Voltage 230/3~ + G                      | N° x AWG / A | 4x 2 / 125A | 4x 8 / 50A        |
| Voltage 440-480/3 ~ + G                 | N° x AWG / A | 4x 6 / 70A  | 4x 10/30A         |
| Steam inlet (Steam model)               | inch         |             | 3/4"              |
| Maximum steam consumption (Steam model) | lbs/h        |             | 21                |
| Water inlet                             | inch         |             | 1"                |
| Water main pressure                     | Kg/cm2       |             | 2-4               |
| Maximum water consumption               | Gal/h        |             | 215**             |
| Drain                                   | mm/inch      |             | 3"                |
| Drainage capacity                       | Gal/min      |             | 52.8              |
| DIMENSIONS / PACKING DIMENSIONS         |              |             |                   |
| Net Width / Gross Width                 |              | In          | 48.23 / 52.6      |
| Net Depth / Gross Depth                 |              | In          | 58.85/ 65.4       |
| Net Height / Gross Height               |              | In          | 64.57 / 73.3      |
| Net weight / Gross weight               |              | Lbs.        | 1920.6 / 2123.4   |
| Volume                                  |              | Ft3         | 145.5             |

\* Programmed No. 2, 100% load



- 01. Soap dispenser
- 02. Emergency stop
- 03. USB port
- 04. Drain
- 05. Electric connection to liquid soap pump
- 06. Electrical connection
- 07. Main switch
- 08. Auxiliary water inlet
- 09. Hot water inlet
- 10. Equipotential connection
- 11. Cold water inlet
- 12. Blur output / Water overload
- 13. Liquid soap connection
- 14. Steam connection
- 15. Ethernet port

|          | A  | B     | C     | D     | E     | F     | G    | H     | I     | J     | K     | L     | M     | N    | O    | P    | Q     | R     | S     | T     | U     | V     | W     | X     | Y     | CGY   | CGZ   |       |
|----------|----|-------|-------|-------|-------|-------|------|-------|-------|-------|-------|-------|-------|------|------|------|-------|-------|-------|-------|-------|-------|-------|-------|-------|-------|-------|-------|
| FWS-180C | mm | 1225  | 1492  | 1640  | 540   | 560   | 115  | 984   | 1368  | 1536  | 1306  | 1551  | 1318  | 61   | 74   | 101  | 651   | 731   | 1110  | 869   | 318   | 1163  | 1080  | 1470  | 992   | 1595  | 644   | 750   |
|          | In | 48.23 | 58.74 | 64.57 | 21.26 | 22.05 | 4.53 | 38.74 | 53.86 | 60.47 | 51.42 | 61.06 | 51.89 | 2.40 | 2.91 | 3.98 | 25.63 | 28.78 | 43.70 | 34.21 | 12.52 | 45.79 | 42.52 | 57.87 | 39.06 | 62.80 | 25.35 | 29.53 |