



WASHING

NORMAL SPIN WASHERS LOW AND MEDIUM CAPACITY FWS-25 TP2



FEATURES

Touch Plus Control

- 7" touchscreen, user friendly and totally programmable.
- Videos on display, ads, instructions.
- Free software for programming, telemetry, data analysis.
- USB Connection.
- 37 Languages.
- 8 dosing signals.

G FACTOR

- High G-Factor of 200.

EFFICIENCY

- Energy Optimization.
- Optimal load.
- Low water consumption.

VERSATILITY

- Custom- Make to order.
- OPL or COIN.
- Electric or Hot water.
- Wet cleaning features.

CONNECTIVITY

- IoT - Fagor-Konnnect standard.
- Remote technical service.
- Laundry Management system: OPL and COIN.

ERGONOMICS

- Biggest door diameter: Ø373.
- Modern lock for easy opening and closing of door

MAINTENANCE

- Hinged panel: for easy access to control panel parts.
- Technical setting: telemetry, error diagnosis, monitoring, software updates.

OTHERS

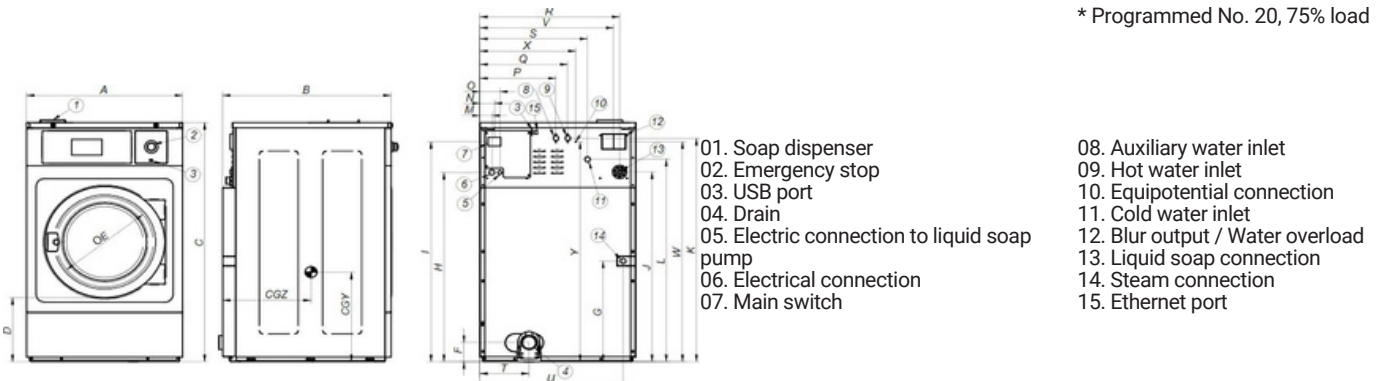
- Hard mounted washers.
- Anchoring to floor with anchoring base.
- Panels in skin plate.
- Drum and tub in stainless steel AISI 304
- 3 water inlets.
- CB and WRAS approved product Option ETL.

OPTIONS

- DQ-2 Dosing pump kit.
- Extra dosing pump DB-1.
- SLUICE: model with 0.31 In drum holes.
- Anchoring base.
- External double drain 3".
- Water FULL FLOW: recirculation of bath water.
- Relay card with 6 extra dosing signals: up to 14 signals.
- Silicone gasket.
- Reversible door opening.
- Tropicalized coating.
- Steam kit to transform an E or HW heated machine into steam version.
- Stainless steel AISI 304 outer casing.
- Stainless steel AISI 304 front panel.
- Coin / token kit.
- Auto unlock kit for the door.

| DRUM | | U. | FWS-25 TP2 | |
|---|--------------|--------------|-------------|-------------------|
| Load capacity | 1:9 / 1:10 | Lb. | 24.3/22.1 | |
| Volume | | CU.FT | 3.5 | |
| Diameter | | In | 24.4 | |
| Depth | | In | 13 | |
| GENERAL DETAILS | | | | |
| Washing speed / Spinning speed | | r.p.m. | 53/759 | |
| G Factor | | - | 200 | |
| Maximum force transmitted | | KN | 2,0 ±3 | |
| Frequency-dynamic force | | Hz | 8.93 | |
| Noise level | | dB | <70 | |
| Coin laundry version | | - | Yes | |
| Double drain | | - | No | |
| Weighing System / Tilting System | | - | No | |
| SLUICE option | | - | Yes | |
| DOOR | | | | |
| Height center door / Height door | | In | 22.5/12.2 | |
| Diameter | | In | 14.3 | |
| POWER | | | | |
| Motor | | Hp | 1.5 | |
| Electric heating power | | kW | 6 | |
| Total electric power (electric model) | | kW | 6.25 | |
| Total electric power (hw, steam model) | | kW | 1.1 | |
| CONNECTIONS | | ELECTRIC | | STEAM / HOT WATER |
| Voltage 208-240/60/1~ + G | N° x AWG / A | 3 x 8 / 35A | | 3 x 14/ 15A |
| Voltage 208-240/60/3~ + G | N° x AWG / A | 4 x 12 / 20A | | - |
| Voltage 440-480/3 ~ + G | N° x AWG / A | 4 x 14 / 15A | | - |
| Steam inlet (Steam model) | inch | 1/2" | | |
| Maximum steam consumption (Steam model) | lbs/h | 7 | | |
| Water inlet | inch | 3/4" | | |
| Water main pressure | Kg/cm2 | 2-4 | | |
| Maximum water consumption | Gal/h | 16.2* | | |
| Drain | mm/inch | 3" | | |
| Drainage capacity | Gal/min | 52.8 | | |
| DIMENSIONS / PACKING DIMENSIONS | | | | |
| Net Width / Gross Width | | In | 28.3/30.8 | |
| Net Depth / Gross Depth | | In | 26.9/35.1 | |
| Net Height / Gross Height | | In | 45.5/55.2 | |
| Net weight / Gross weight | | Lbs. | 436.6/510.7 | |
| Volume | | Ft3 | 34.3 | |

* Programmed No. 20, 75% load



| | A | B | C | D | E | F | G | H | I | J | K | L | M | N | O | P | Q | R | S | T | U | V | W | X | Y | CGY | CGZ | |
|--------|----|-------|-------|-------|-------|-------|------|-------|-------|-------|-------|-------|-------|------|------|------|-------|-------|-------|-------|------|-------|-------|-------|-------|-------|-------|-------|
| FWS-25 | mm | 719 | 684 | 1158 | 310 | 373 | 144 | 440 | 886 | 1054 | 889 | 1073 | 958 | 61 | 74 | 101 | 316 | 376 | 637 | 475 | 211 | 654 | 607 | 1073 | 424 | 1118 | 383 | 511 |
| | In | 28.31 | 26.93 | 45.59 | 12.20 | 14.69 | 5.67 | 17.32 | 34.88 | 41.50 | 35.00 | 42.24 | 37.72 | 2.40 | 2.91 | 3.98 | 12.44 | 14.80 | 25.08 | 18.70 | 8.31 | 25.75 | 23.90 | 42.24 | 16.69 | 44.02 | 15.08 | 20.12 |



WASHING

NORMAL SPIN WASHERS LOW AND MEDIUM CAPACITY FWS-30 TP2



FEATURES

Touch Plus Control

- 7" touchscreen, user friendly and totally programmable.
- Videos on display, ads, instructions.
- Free software for programming, telemetry, data analysis.
- USB Connection.
- 37 Languages.
- 8 dosing signals.

G FACTOR

- High G-Factor of 200.

EFFICIENCY

- Energy Optimization.
- Optimal load.
- Low water consumption.

VERSATILITY

- Custom- Make to order.
- OPL or COIN.
- Electric or Hot water.
- Wet cleaning features.

CONNECTIVITY

- IoT - Fagor-Konnnect standard.
- Remote technical service.
- Laundry Management system: OPL and COIN.

ERGONOMICS

- Biggest door diameter: Ø373.
- Easy opening/closing system for door lock.

MAINTENANCE

- Hinged panel: for easy access to control panel parts.

Technical setting:

telemetry, error diagnosis, monitoring, software updates.

OTHERS

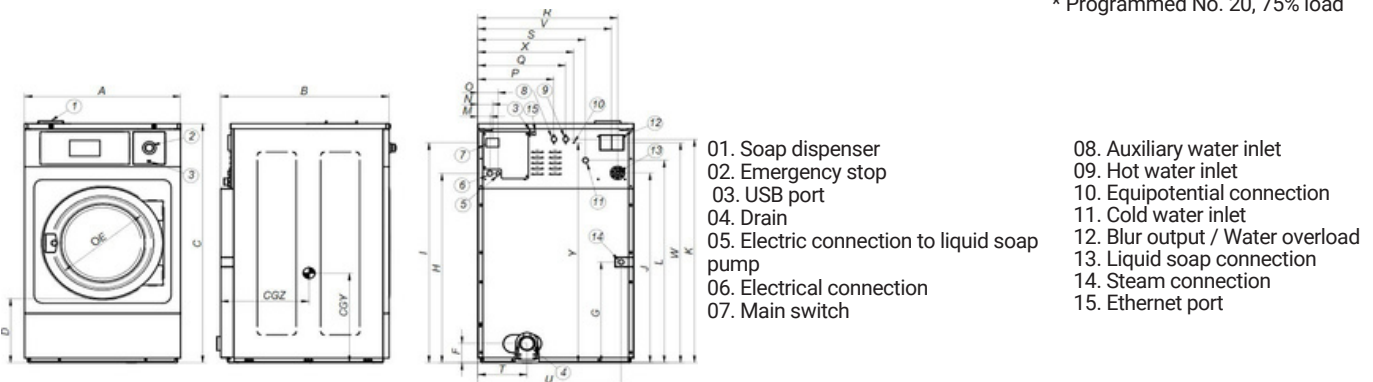
- Hard mounted washers.
- Anchoring to floor with anchoring base.
- Panels in skin plate.
- Drum and tub in stainless steel AISI 304
- 3 water inlets.
- CB and WRAS approved product Option ETL.

OPTIONS

- DQ-2 Dosing pump kit.
- Extra dosing pump DB-1.
- SLUICE: model with 0.31 In drum holes.
- Anchoring base. • External double drain 3".
- Water FULL FLOW: recirculation of bath water.
- Relay card with 6 extra dosing signals: up to 14 signals.
- Silicone gasket.
- Reversible door opening.
- Tropicalized coating.
- Steam kit to transform an E or HW heated machine into steam version.
- Stainless steel AISI 304 outer casing.
- Stainless steel AISI 304 front panel.
- Coin / token kit.
- Auto unlock kit for the door.

| DRUM | | U. | FWS - 30 TP2 | |
|---|--------------|--------------|--------------|-------------------|
| Load capacity 1:9 / 1:10 | | Lb. | 30.9/28.7 | |
| Volume | | CU.FT | 4.6 | |
| Diameter | | In | 24.4 | |
| Depth | | In | 16.9 | |
| GENERAL DETAILS | | | | |
| Washing speed / Spinning speed | | r.p.m. | 53/759 | |
| G Factor | | - | 200 | |
| Maximum force transmitted | | KN | 2.31 ±4 | |
| Frequency-dynamic force | | Hz | 8,93 | |
| Noise level | | dB | <70 | |
| Coin laundry version | | - | Yes | |
| Double drain | | - | Opt. | |
| Weighing System / Tilting System | | - | No | |
| SLUICE option | | - | Yes | |
| DOOR | | | | |
| Height center door / Height door | | In | 22.5/12.2 | |
| Diameter | | In | 14.7 | |
| POWER | | | | |
| Motor | | Hp | 1.5 | |
| Electric heating power | | kW | 9 | |
| Total electric power (electric model) | | kW | 9.5 | |
| Total electric power (hw, steam model) | | kW | 1.1 | |
| CONNECTIONS | | ELECTRIC | | STEAM / HOT WATER |
| Voltage 208-240/60/1~ + G | Nº x AWG / A | 3 x 6 / 50A | | 3x 14 / 15A |
| Voltage 208-240/60/3~ + G | Nº x AWG / A | 4 x 10 / 32A | | - |
| Voltage 440-480/3 ~ + G | Nº x AWG / A | 4 x 12 / 20A | | - |
| Steam inlet (Steam model) | inch | 1/2" | | |
| Maximum steam consumption (Steam model) | lbs/h | 8,5 | | |
| Water inlet | inch | 3/4" | | |
| Water main pressure | Kg/cm2 | 2-4 | | |
| Maximum water consumption | Gal/h | 20,8* | | |
| Drain | mm/inch | 3" | | |
| Drainage capacity | Gal/min | 52.8 | | |
| DIMENSIONS / PACKING DIMENSIONS | | | | |
| Net Width / Gross Width | | In | 28.31/30.8 | |
| Net Depth / Gross Depth | | In | 33.70/39.0 | |
| Net Height / Gross Height | | In | 45.87/55.2 | |
| Net weight / Gross weight | | Lbs. | 463.1/540.2 | |
| Volume | | Ft3 | 38.1 | |

* Programmed No. 20, 75% load



| | A | B | C | D | E | F | G | H | I | J | K | L | M | N | O | P | Q | R | S | T | U | V | W | X | Y | CGY | CGZ | |
|--------|----|-------|-------|-------|-------|-------|------|-------|-------|-------|-------|-------|-------|------|------|------|-------|-------|-------|-------|------|-------|-------|-------|-------|-------|-------|-------|
| FWS-30 | mm | 719 | 856 | 1165 | 310 | 373 | 143 | 440 | 886 | 1.054 | 889 | 1073 | 958 | 61 | 74 | 101 | 316 | 376 | 637 | 475 | 211 | 654 | 607 | 1053 | 416 | 1053 | 484 | 524 |
| | In | 28.31 | 33.70 | 45.87 | 12.20 | 14.69 | 5.83 | 17.32 | 34.88 | 41.50 | 35.00 | 42.24 | 37.72 | 2.40 | 2.91 | 3.98 | 12.44 | 14.80 | 25.08 | 18.70 | 8.31 | 25.75 | 23.90 | 41.46 | 16.38 | 41.46 | 19.06 | 20.63 |



WASHING

NORMAL SPIN WASHERS LOW AND MEDIUM CAPACITY FWS-40 TP2



FEATURES

Touch Plus Control

- 7" touchscreen, user friendly and totally programmable.
- Videos on display, ads, instructions.
- Free software for programming, telemetry, data analysis.
- USB Connection.
- 37 Languages.
- 8 dosing signals.

G FACTOR

- G-FACTOR 200.

EFFICIENCY

- Energy Optimization.
- Optimal load.
- Low water consumption.

VERSATILITY

- Custom- Make to order.
- OPL or COIN.
- Electric or Hot water.
- Wet cleaning features.

CONNECTIVITY

- IoT - Fagor-Konnect standard.
- Remote technical service.
- Laundry Management system: OPL and COIN.

ERGONOMICS

- Large Loading doors: Ø460.
- Easy opening/closing system for door lock.

MAINTENANCE

- Hinged panel: easy access to parts.
- Equivalent parts for all models: contactors, electronic devices, gear.
- Technical menu: traceability, error diagnosis.

OTHERS

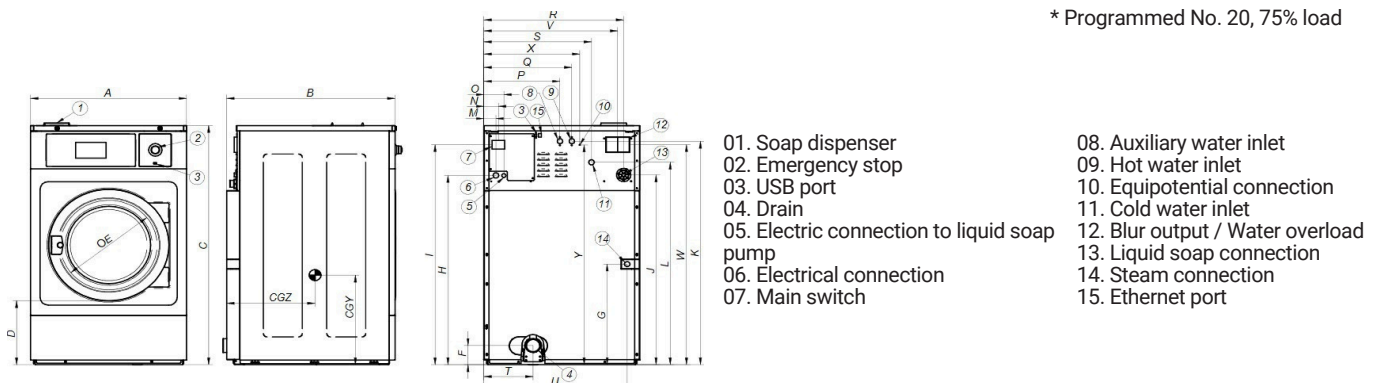
- Hard mounted washers.
- Anchoring to floor with anchoring base.
- Panels in skin plate.
- 3 water inlets.
- CB and WRAS approved.

OPTIONS

- Extra dosing pump DB-1.
- Anchoring base.
- Double drain.
- Relay card with 6 extra dosing signals.
- Silicone gasket.
- Reversible door opening.
- Tropicalized coating.
- Stainless steel AISI 304 outer casing.
- Stainless steel AISI 304 front panel.
- Coin / token kit.
- Auto unlock kit for the door.

| DRUM | | | |
|---|--------------|--------------|-------------------|
| | U. | FWS - 40 TP2 | |
| Load capacity 1:9 / 1:10 | Lb. | 44.1/39.7 | |
| Volume | CU.FT | 6.5 | |
| Diameter | In | 27.6 | |
| Depth | In | 18.5 | |
| GENERAL DETAILS | | | |
| Washing speed / Spinning speed | r.p.m. | 50/714 | |
| G Factor | - | 200 | |
| Maximum force transmitted | KN | 2.63 ±5 | |
| Frequency-dynamic force | Hz | 8.42 | |
| Noise level | dB | <70 | |
| Coin laundry version | - | Yes | |
| Double drain | - | Opt. | |
| Weighing System / Tilting System | - | No | |
| SLUICE option | - | Yes | |
| DOOR | | | |
| Height center door / Height door | In | 25.8/13.7 | |
| Diameter | In | 18.1 | |
| POWER | | | |
| Motor | Hp | 3 | |
| Electric heating power | kW | 12 | |
| Total electric power (electric model) | kW | 12.75 | |
| Total electric power (hw, steam model) | kW | 2.2 | |
| CONNECTIONS | | ELECTRIC | STEAM / HOT WATER |
| Voltage 208-240/60/1~ + G | N° x AWG / A | 3 x 10 / 70A | 3 x 14 / 15A |
| Voltage 208-240/60/3~ + G | N° x AWG / A | 4 x 8 / 40A | - |
| Voltage 440-480/3 ~ + G | N° x AWG / A | 4 x 10 / 30A | - |
| Steam inlet (Steam model) | inch | 1/2" | |
| Maximum steam consumption (Steam model) | lbs/h | 12 | |
| Water inlet | inch | 3/4" | |
| Water main pressure | Kg/cm2 | 2-4 | |
| Maximum water consumption | Gal/h | 31.7* | |
| Drain | mm/inch | 3" | |
| Drainage capacity | Gal/min | 52.8 | |
| DIMENSIONS / PACKING DIMENSIONS | | | |
| Net Width / Gross Width | In | 31.02/33.5 | |
| Net Depth / Gross Depth | In | 36.81/39.9 | |
| Net Height / Gross Height | In | 51.46/62.4 | |
| Net weight / Gross weight | Lbs. | 599.8/681.3 | |
| Volume | Ft3 | 48 | |

* Programmed No. 20, 75% load



| | A | B | C | D | E | F | G | H | I | J | K | L | M | N | O | P | Q | R | S | T | U | V | W | X | Y | CGY | CGZ | |
|----------|----|-------|-------|-------|-------|-------|------|-------|-------|-------|-------|-------|-------|------|------|------|-------|-------|-------|-------|------|-------|-------|-------|-------|-------|-------|-------|
| FWS - 40 | mm | 788 | 935 | 1307 | 348 | 460 | 143 | 552 | 1035 | 1203 | 1038 | 1222 | 1107 | 61 | 74 | 101 | 385 | 445 | 706 | 544 | 245 | 724 | 676 | 1202 | 485 | 1202 | 479 | 546 |
| | In | 31.02 | 36.81 | 51.46 | 13.70 | 18.11 | 5.63 | 21.73 | 40.75 | 47.36 | 40.87 | 48.11 | 43.58 | 2.40 | 2.91 | 3.98 | 15.16 | 17.52 | 27.80 | 21.42 | 9.65 | 28.50 | 26.61 | 47.32 | 19.09 | 47.32 | 18.86 | 21.50 |



WASHING

NORMAL SPIN WASHERS LOW AND MEDIUM CAPACITY FWS-50 TP2



FEATURES

Touch Plus Control

- 7" touchscreen, user friendly and totally programmable.
- Videos on display, ads, instructions.
- Free software for programming, telemetry, data analysis.
- USB Connection.
- 37 Languages.
- 8 dosing signals.

G FACTOR

- G-FACTOR 200.

EFFICIENCY

- Energy Optimization.
- Optimal load.
- Low water consumption.

VERSATILITY

- Custom- Make to order.
- OPL or COIN.
- Electric or Hot water.
- Wet cleaning features.

CONNECTIVITY

- IoT - Fagor-Konnect standard.
- Remote technical service.
- Laundry Management system: OPL and COIN.

ERGONOMICS

- Biggest door diameter: Ø460.
- Easy opening/closing system for door lock.

MAINTENANCE

- Hinged panel: easy access to parts.
- Equivalent parts for all models: contactors, electronic devices, gear.
- Technical menu: traceability, error diagnosis.

OTHERS

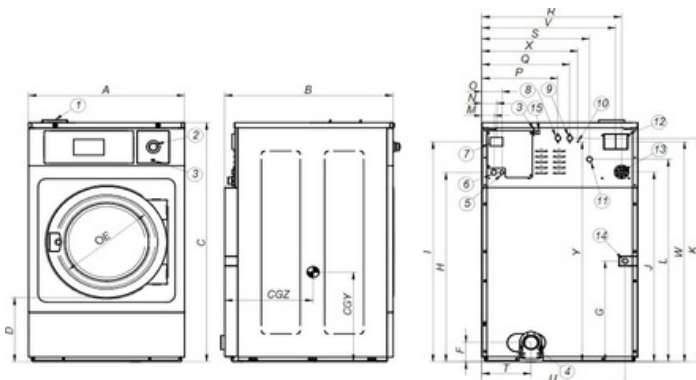
- Hard mounted washers.
- Anchoring to floor with anchoring base.
- Panels in skin plate.
- Drum and tub in stainless steel AISI 304
- 3 water inlets.
- CB and WRAS approved product Option ETL.

OPTIONS

- DQ-2 Dosing pump kit.
- Extra dosing pump DB-1.
- SLUICE: model with 0.31 In drum holes.
- Anchoring base.
- Double drain.
- Water RE-CYCLE: recirculation of bath water.
- Relay card with 6 extra dosing signals: up to 14 signals.
- Silicone gasket.
- Reversible door opening.
- Tropicalized coating.
- Steam kit to transform an E or HW heated machine into steam version.
- Stainless steel AISI 304 outer casing.
- Stainless steel AISI 304 front panel.
- Coin / token kit.
- Auto unlock kit for the door.

| DRUM | | U. | FWS-50 TP2 | |
|---|--------------|--------------|-------------|-------------------|
| Load capacity | 1:9 / 1:10 | Lb. | 55.1/48.5 | |
| Volume | | CU.FT | 7.8 | |
| Diameter | | In | 27.6 | |
| Depth | | In | 22.1 | |
| GENERAL DETAILS | | | | |
| Washing speed / Spinning speed | | r.p.m. | 50/714 | |
| G Factor | | - | 200 | |
| Maximum force transmitted | | KN | 3.04 ±5 | |
| Frequency-dynamic force | | Hz | 8.42 | |
| Noise level | | dB | <70 | |
| Coin laundry version | | - | Yes | |
| Double drain | | - | Opt. | |
| Weighing System / Tilting System | | - | No | |
| SLUICE option | | - | Yes | |
| DOOR | | | | |
| Height center door / Height door | | In | 25.8/13.7 | |
| Diameter | | In | 18.1 | |
| POWER | | | | |
| Motor | | Hp | 3 | |
| Electric heating power | | kW | 12 | |
| Total electric power (electric model) | | kW | 12.75 | |
| Total electric power (hw, steam model) | | kW | 2.2 | |
| CONNECTIONS | | ELECTRIC | | STEAM / HOT WATER |
| Voltage 208-240/60/1~ + G | N° x AWG / A | 3 x 10 / 70A | | 3 x 14 / 15A |
| Voltage 230/3~ + G | N° x AWG / A | 4 x 8 / 40A | | - |
| Voltage 440-480/3 ~ + G | N° x AWG / A | 4 x 10 / 30A | | - |
| Steam inlet (Steam model) | inch | 1/2" | | |
| Maximum steam consumption (Steam model) | lbs/h | 12 | | |
| Water inlet | inch | 3/4" | | |
| Water main pressure | Kg/cm2 | 2-4 | | |
| Maximum water consumption | Gal/h | 31.7* | | |
| Drain | mm/inch | 3" | | |
| Drainage capacity | Gal/min | 52.8 | | |
| DIMENSIONS / PACKING DIMENSIONS | | | | |
| Net Width / Gross Width | | In | 31.02/33.5 | |
| Net Depth / Gross Depth | | In | 40.75/43.6 | |
| Net Height / Gross Height | | In | 51.46/62.4 | |
| Net weight / Gross weight | | Lbs. | 650.5/738.7 | |
| Volume | | Ft3 | 53 | |

* Programmed No. 20, 75% load



- 01. Soap dispenser
- 02. Emergency stop
- 03. USB port
- 04. Drain
- 05. Electric connection to liquid soap pump
- 06. Electrical connection
- 07. Main switch

- 08. Auxiliary water inlet
- 09. Hot water inlet
- 10. Equipotential connection
- 11. Cold water inlet
- 12. Blur output / Water overload
- 13. Liquid soap connection
- 14. Steam connection
- 15. Ethernet port

| | A | B | C | D | E | F | G | H | I | J | K | L | M | N | O | P | Q | R | S | T | U | V | W | X | Y | CGY | CGZ | |
|--------|----|-------|-------|-------|-------|-------|-------|-------|-------|-------|-------|-------|-------|------|------|------|-------|-------|-------|-------|------|-------|-------|-------|-------|-------|-------|-------|
| FWS-50 | mm | 788 | 1035 | 1307 | 348 | 460 | 143 | 552 | 1035 | 1203 | 1038 | 1222 | 1107 | 61 | 74 | 101 | 385 | 445 | 706 | 544 | 245 | 724 | 676 | 1202 | 485 | 1202 | 479 | 586 |
| | In | 31.02 | 40.75 | 51.46 | 13.70 | 18.11 | 53.63 | 21.73 | 40.75 | 47.36 | 40.87 | 48.11 | 43.58 | 2.40 | 2.91 | 3.98 | 15.16 | 17.52 | 27.80 | 21.42 | 9.65 | 28.50 | 26.61 | 47.32 | 19.09 | 47.32 | 18.86 | 23.07 |



WASHING

NORMAL SPIN WASHERS LOW AND MEDIUM CAPACITY FWS - 65 TP2



FEATURES

Touch Plus Control

- 7" touchscreen, user friendly and totally programmable.
- Videos on display, ads, instructions.
- Free software for programming, telemetry, data analysis.
- USB Connection.
- 37 Languages.
- 8 dosing signals.

G FACTOR

- G-FACTOR 200.

EFFICIENCY

- Energy Optimization.
- Optimal load.
- Low water consumption.

VERSATILITY

- Custom- Make to order.
- OPL or COIN.
- Electric or Hot water.
- Wet cleaning features.

CONNECTIVITY

- IoT - Fagor-Konnect standard.
- Remote technical service.
- Laundry Management system: OPL and COIN.

ERGONOMICS

- Biggest door diameter: Ø460.
- Easy opening/closing system for door lock.

MAINTENANCE

- Hinged panel: easy and ergonomic access.
- Equivalent parts for all models: contactors, electronic devices,...
- Technical menu: telemetry, error diagnosis.

OTHERS

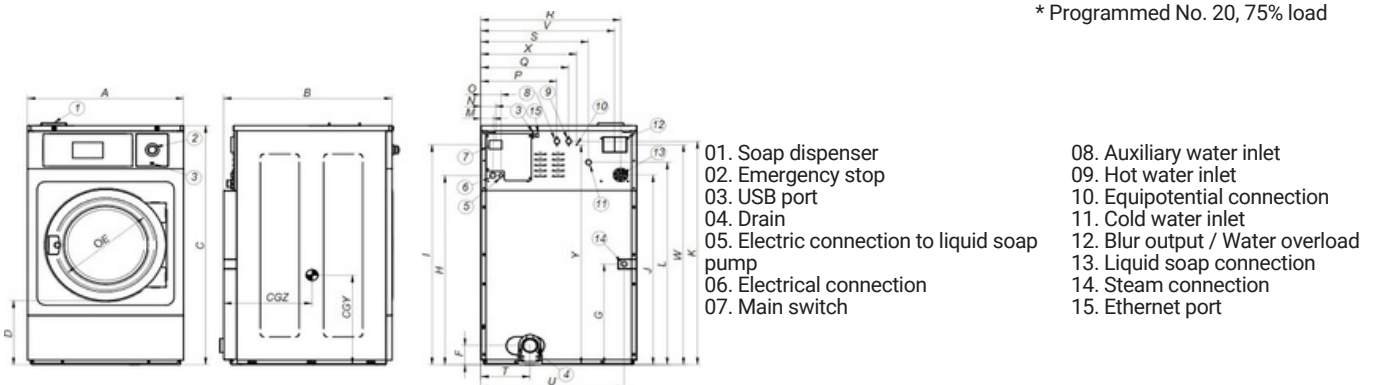
- Hard mounted washers.
- Anchoring to floor with anchoring base.
- Panels in skin plate.
- Drum and tub in stainless steel AISI 304
- 3 water inlets.
- CB and WRAS approved product Option ETL.

OPTIONS

- DQ-2 Dosing pump kit.
- Extra dosing pump DB-1.
- SLUICE: model with 0.31 In drum holes.
- Anchoring base.
- Double drain.
- Normally closed valve.
- Water RE-CYCLE: recirculation of bath water.
- Relay card with 6 extra dosing signals: up to 14 signals.
- Silicone gasket.
- Reversible door opening.
- Tropicalized coating.
- Steam kit to transform an E or HW heated machine into steam version.
- Stainless steel AISI 304 outer casing.
- Stainless steel AISI 304 front panel.
- Coin / token kit.
- Auto unlock kit for the door.

| DRUM | | U. | FWS-65 TP2 | |
|---|--------------|-------------|-------------|-------------------|
| Load capacity | 1:9 / 1:10 | Lb. | 68.4/61.7 | |
| Volume | | CU.FT | 9.8 | |
| Diameter | | In | 30.3 | |
| Depth | | In | 23 | |
| GENERAL DETAILS | | | | |
| Washing speed / Spinning speed | | r.p.m. | 48/682 | |
| G Factor | | - | 200 | |
| Maximum force transmitted | | KN | 3,68 ± 6 | |
| Frequency-dynamic force | | Hz | 8,02 | |
| Noise level | | dB | <70 | |
| Coin laundry version | | - | Yes | |
| Double drain | | - | Opt. | |
| Weighing System / Tilting System | | - | No | |
| SLUICE option | | - | Yes | |
| DOOR | | | | |
| Height center door / Height door | | In | 27.6/15.8 | |
| Diameter | | In | 18.1 | |
| POWER | | | | |
| Motor | | Hp | 5.4 | |
| Electric heating power | | kW | 18 | |
| Total electric power (electric model) | | kW | 19.2 | |
| Total electric power (hw, steam model) | | kW | 4 | |
| CONNECTIONS | | ELECTRIC | | STEAM / HOT WATER |
| Voltage 208-240/60/1~ + G | N° x AWG / A | - | | 3 x 12 / 20A |
| Voltage 230/3~ + G | N° x AWG / A | 4 x 5 / 60A | | 4 x 12 / 20A |
| Voltage 440-480/3 ~ + G | N° x AWG / A | 4 x 8 / 40A | | - |
| Steam inlet (Steam model) | inch | 3/4" | | |
| Maximum steam consumption (Steam model) | lbs/h | 15 | | |
| Water inlet | inch | 3/4" | | |
| Water main pressure | Kg/cm2 | 2-4 | | |
| Maximum water consumption | Gal/h | 43.5* | | |
| Drain | mm/inch | 3" | | |
| Drainage capacity | Gal/min | 52.8 | | |
| DIMENSIONS / PACKING DIMENSIONS | | | | |
| Net Width / Gross Width | | In | 34.80/37.2 | |
| Net Depth / Gross Depth | | In | 42.75/48.5 | |
| Net Height / Gross Height | | In | 52.76/62.4 | |
| Net weight / Gross weight | | Lbs. | 888.6/950.4 | |
| Volume | | Ft3 | 65 | |

* Programmed No. 20, 75% load



| | A | B | C | D | E | F | G | H | I | J | K | L | M | N | O | P | Q | R | S | T | U | V | W | X | Y | CGY | CGZ | |
|--------|----|-------|-------|-------|-------|-------|------|-------|-------|-------|-------|-------|-------|------|------|------|-------|-------|-------|-------|-------|-------|-------|-------|-------|-------|-------|-------|
| FWS-65 | mm | 884 | 1075 | 1340 | 400 | 460 | 149 | 548 | 1063 | 1230 | 1065 | 1250 | 1135 | 61 | 74 | 101 | 430 | 510 | 801 | 640 | 268 | 820 | 772 | 1220 | 570 | 1210 | 591 | 593 |
| | In | 34.80 | 42.75 | 52.76 | 15.75 | 18.11 | 5.87 | 21.57 | 41.85 | 48.43 | 41.93 | 49.21 | 44.68 | 2.40 | 2.91 | 3.98 | 16.93 | 20.08 | 31.54 | 25.20 | 10.55 | 32.28 | 30.39 | 48.03 | 22.40 | 47.64 | 23.27 | 23.35 |



WASHING

NORMAL SPIN WASHERS LOW AND MEDIUM CAPACITY FWS-80C TP2

FEATURES

Touch Plus Control

- 7" touchscreen, user friendly and totally programmable.
- Videos on display, ads, instructions.
- Free software for programming, telemetry, data analysis.
- USB Connection.
- 37 Languages.
- 8 dosing signals.

G FACTOR

- G-FACTOR 200.

EFFICIENCY

- Energy Optimization.
- Optimal load.
- Low water consumption.

VERSATILITY

- Custom- Make to order.
- OPL or COIN.
- Electric or Hot water.
- Wet cleaning features.

CONNECTIVITY

- IoT - Fagor-Konnect standard.
- Remote technical service.
- Laundry Management system: OPL and COIN.

ERGONOMICS

- Biggest door diameters: Ø560 (for FWS-80C/100C).
- Easy opening/closing system for door lock.

MAINTENANCE

- Hinged panel: easy access to parts.
- Equivalent parts for all models: contactors, electronic devices, gear.
- Technical menu: traceability, error diagnosis.

OTHERS

- Hard mounted washers.
- Anchoring to floor with anchoring base.
- Panels in skin plate.
- Drum and tub in stainless steel AISI 304
- 3 water inlets.
- CB and WRAS approved product Option ETL.

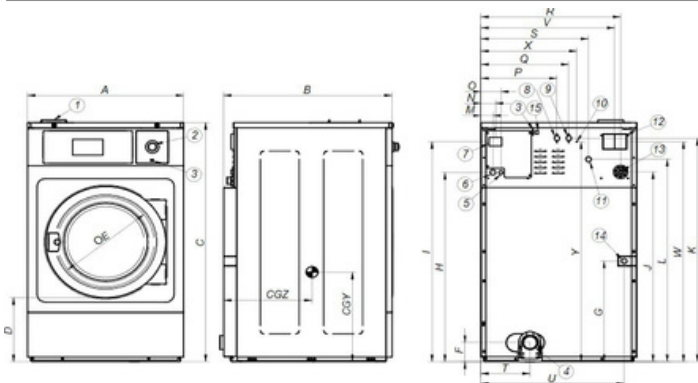
OPTIONS

- Double drain.
- Normally closed valve.
- Silicon gasket (for FWS-80).
- Water FULL FLOW recirculation of bath water.
- Relay card with 6 extra dosing signals: up to 14 signals.
- Printer.
- Reversible door opening.
- Tropicalized coating.
- Steam kit to transform an E or HW heated machine into steam version.
- Stainless steel outer casing.
- Stainless steel front panel.
- SLUICE: model with 0.31 In drum holes (for FWS-80C/100C).
- Anchoring base.
- Coin / token kit.
- Delayed door opening in case of power outage.



| DRUM | | U. | FWS -80C TP2 | |
|---|--------------|-------------|---------------|-------------------|
| Load capacity | 1:9 / 1:10 | Lb. | 86/77.2 | |
| Volume | | CU.FT | 12.4 | |
| Diameter | | In | 33.9 | |
| Depth | | In | 23.7 | |
| GENERAL DETAILS | | | | |
| Washing speed / Spinning speed | | r.p.m. | 45/644 | |
| G Factor | | - | 200 | |
| Maximum force transmitted | | KN | 4,59 ±8 | |
| Frequency-dynamic force | | Hz | 7,58 | |
| Noise level | | dB | <70 | |
| Coin laundry version | | - | Yes | |
| Double drain | | - | Opt. | |
| Weighing System / Tilting System | | - | No | |
| SLUICE option | | - | Yes | |
| DOOR | | | | |
| Height center door / Height door | | In | 29/17.3 | |
| Diameter | | In | 22.1 | |
| POWER | | | | |
| Motor | | Hp | 5.4 | |
| Electric heating power | | kW | 21 | |
| Total electric power (electric model) | | kW | 22 | |
| Total electric power (hw, steam model) | | kW | 4 | |
| CONNECTIONS | | ELECTRIC | | STEAM / HOT WATER |
| Voltage 208-240/60/1~ + G | Nº x AWG / A | - | | 3 x 12 / 20A |
| Voltage 230/3~ + G | Nº x AWG / A | 4 x 6 / 70A | | 4 x 12 / 20A |
| Voltage 440-480/3 ~ + G | Nº x AWG / A | 4 x 8 / 45A | | - |
| Steam inlet (Steam model) | inch | 3/4" | | |
| Maximum steam consumption (Steam model) | lbs/h | 18 | | |
| Water inlet | inch | 3/4" | | |
| Water main pressure | Kg/cm2 | 2-4 | | |
| Maximum water consumption | Gal/h | 52.7* | | |
| Drain | mm/inch | 3" | | |
| Drainage capacity | Gal/min | 52.8 | | |
| DIMENSIONS / PACKING DIMENSIONS | | | | |
| Net Width / Gross Width | | In | 38.54/41.2 | |
| Net Depth / Gross Depth | | In | 45.47/50.4 | |
| Net Height / Gross Height | | In | 55.55/65.2 | |
| Net weight / Gross weight | | Lbs. | 1049.6/1124.6 | |
| Volume | | Ft3 | 77.7 | |

* Programmed No. 20, 75% load



- 01. Soap dispenser
- 02. Emergency stop
- 03. USB port
- 04. Drain
- 05. Electric connection to liquid soap pump
- 06. Electrical connection
- 07. Main switch
- 08. Auxiliary water inlet
- 09. Hot water inlet
- 10. Equipotential connection
- 11. Cold water inlet
- 12. Blur output / Water overload
- 13. Liquid soap connection
- 14. Steam connection
- 15. Ethernet port

| | A | B | C | D | E | F | G | H | I | J | K | L | M | N | O | P | Q | R | S | T | U | V | W | X | Y | CGY | CGZ | |
|---------|----|-------|-------|-------|-------|-------|------|-------|-------|-------|-------|-------|-------|------|------|------|-------|-------|-------|-------|-------|-------|-------|-------|-------|-------|-------|-------|
| FWS-80C | mm | 979 | 1155 | 1411 | 370 | 560 | 149 | 623 | 1139 | 1307 | 1116 | 1322 | 1211 | 61 | 74 | 101 | 545 | 625 | 885 | 715 | 262 | 917 | 855 | 1281 | 760 | 1373 | 635 | 682 |
| | In | 38.54 | 45.47 | 55.55 | 14.57 | 22.05 | 5.87 | 24.53 | 44.84 | 51.46 | 43.94 | 52.05 | 47.68 | 2.40 | 2.91 | 3.98 | 21.45 | 24.61 | 34.84 | 28.15 | 36.10 | 32.72 | 33.66 | 24.57 | 29.92 | 54.06 | 26.85 | 26.85 |



WASHING

NORMAL SPIN WASHERS LOW AND MEDIUM CAPACITY FWS-100C TP2

FEATURES

Touch Plus Control

- 7" touchscreen, user friendly and totally programmable.
- Videos on display, ads, instructions.
- Free software for programming, telemetry, data analysis.
- USB Connection.
- 37 Languages.
- 8 dosing signals.

G FACTOR

- G-FACTOR 200.

EFFICIENCY

- Energy Optimization.
- Optimal load.
- Low water consumption.

VERSATILITY

- Custom- Make to order.
- OPL or COIN.
- Electric or Hot water.
- Wet cleaning features.

CONNECTIVITY

- IoT - Fagor-Konnect standard.
- Remote technical service.
- Laundry Management system: OPL and COIN.

ERGONOMICS

- Biggest door diameter: Ø560 (for FWS-80C/100C).
- Easy opening/closing system for door lock.

MAINTENANCE

- Hinged panel: easy access to parts.
- Equivalent parts for all models: contactors, electronic devices, gear.
- Technical menu: traceability, error diagnosis.

OTHERS

- Hard mounted washers.
- Anchoring to floor with anchoring base.
- Panels in skin plate.
- Drum and tub in stainless steel AISI 304
- 3 water inlets.
- CB and WRAS approved product Option ETL.

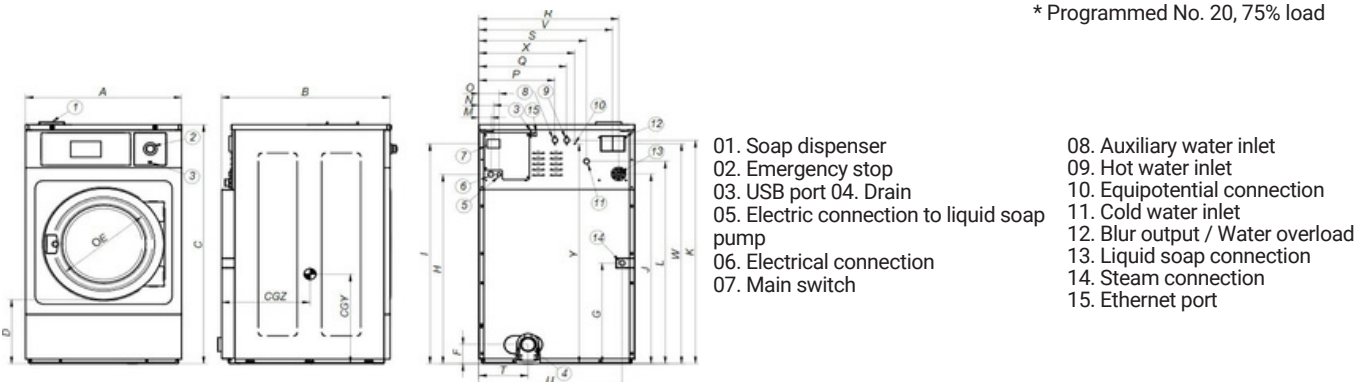
OPTIONS

- Double drain.
- Normally closed valve.
- Silicon gasket (for FWS-80).
- Water FULL FLOW recirculation of bath water.
- Relay card with 6 extra dosing signals: up to 14 signals.
- Printer.
- Reversible door opening.
- Tropicalized model: protected board.
- Steam kit to transform an E or HW heated machine into steam version.
- Stainless steel outer casing.
- Stainless steel front panel.
- SLUICE: model with 0.31 In drum holes (for FWS-80C/100C).
- Anchoring base.
- Coin / token kit.
- Delayed door opening in case of power outage.

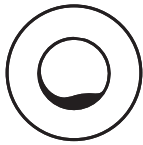


| DRUM | | U. | FWS - 100C TP2 | |
|---|--------------|-------------|----------------|-------------------|
| Load capacity | 1:9 / 1:10 | Lb. | 103.6/92.6 | |
| Volume | | CU.FT | 15.9 | |
| Diameter | | In | 33.9 | |
| Depth | | In | 28.4 | |
| GENERAL DETAILS | | | | |
| Washing speed / Spinning speed | | r.p.m. | 45/644 | |
| G Factor | | - | 200 | |
| Maximum force transmitted | | KN | 5.9 ±8 | |
| Frequency-dynamic force | | Hz | 7.58 | |
| Noise level | | dB | <70 | |
| Coin laundry version | | - | Yes | |
| Double drain | | - | Opt. | |
| Weighing System / Tilting System | | - | No | |
| SLUICE option | | - | Yes | |
| DOOR | | | | |
| Height center door / Height door | | In | 29/17.3 | |
| Diameter | | In | 22.1 | |
| POWER | | | | |
| Motor | | Hp | 8 | |
| Electric heating power | | kW | 21 | |
| Total electric power (electric model) | | kW | 22 | |
| Total electric power (hw, steam model) | | kW | 6 | |
| CONNECTIONS | | ELECTRIC | | STEAM / HOT WATER |
| Voltage 208-240/60/1~ + G | N° x AWG / A | - | | - |
| Voltage 230/3~ + G | N° x AWG / A | 4 x 6 / 70A | | 4 x 10 / 30A |
| Voltage 440-480/3 ~ + G | N° x AWG / A | 4 x 8 / 45A | | 4 x 15 / 15A |
| Steam inlet (Steam model) | inch | 3/4" | | |
| Maximum steam consumption (Steam model) | lbs/h | 21 | | |
| Water inlet | inch | 3/4" | | |
| Water main pressure | Kg/cm2 | 2-4 | | |
| Maximum water consumption | Gal/h | 67.7* | | |
| Drain | mm/inch | 3" | | |
| Drainage capacity | Gal/min | 52.8 | | |
| DIMENSIONS / PACKING DIMENSIONS | | | | |
| Net Width / Gross Width | | In | 38.54/44.3 | |
| Net Depth / Gross Depth | | In | 52.17/56.7 | |
| Net Height / Gross Height | | In | 55.55/64.6 | |
| Net weight / Gross weight | | Lbs. | 1323/1477.4 | |
| Volume | | Ft3 | 91.8 | |

* Programmed No. 20, 75% load



| | A | B | C | D | E | F | G | H | I | J | K | L | M | N | O | P | Q | R | S | T | U | V | W | X | Y | CGY | CGZ | |
|------------|----|-------|-------|-------|-------|-------|------|-------|-------|-------|-------|-------|-------|------|------|------|-------|-------|-------|-------|-------|-------|-------|-------|-------|-------|-------|-------|
| FWS - 100C | mm | 979 | 1325 | 1411 | 370 | 560 | 154 | 623 | 1139 | 1307 | 1116 | 1322 | 1211 | 61 | 74 | 101 | 545 | 625 | 885 | 715 | 262 | 917 | 855 | 1281 | 760 | 1373 | 635 | 760 |
| | In | 38.54 | 52.17 | 55.55 | 14.57 | 22.05 | 6.06 | 24.53 | 44.84 | 51.46 | 43.94 | 52.05 | 47.68 | 2.40 | 2.91 | 3.98 | 21.46 | 24.61 | 34.85 | 28.15 | 10.31 | 36.10 | 33.66 | 50.43 | 29.92 | 54.06 | 25.00 | 29.92 |



WASHING

NORMAL SPIN WASHER EXTRACTORS HIGH CAPACITY FWS-135C TP2



FEATURES

Touch Plus Control

- 7" touchscreen, user friendly and totally programmable.
- Videos on display, ads, instructions.
- Free software for programming, telemetry, data analysis.
- USB Connection.
- 37 Languages.
- 8 dosing signals.

G FACTOR

- High G-Factor 150.

EFFICIENCY

- Energy Optimization.
- Optimal load.
- Low water consumption.

VERSATILITY

- Custom- Make to order.
- OPL or COIN.
- Electric or Hot water.
- Wet cleaning features.

CONNECTIVITY

- IoT - Fagor-Konnect standard.
- Remote technical service.
- Laundry Management system: OPL and COIN.

ERGONOMICS

- Big door diameter: Ø 560 mm.
- Easy opening/closing system for door lock.

MAINTENANCE

- Hinged panel: easy and ergonomic access.
- Equivalent parts for all models: contactors, electronic devices,...
- Technical menu: telemetry, error diagnosis.

OTHERS

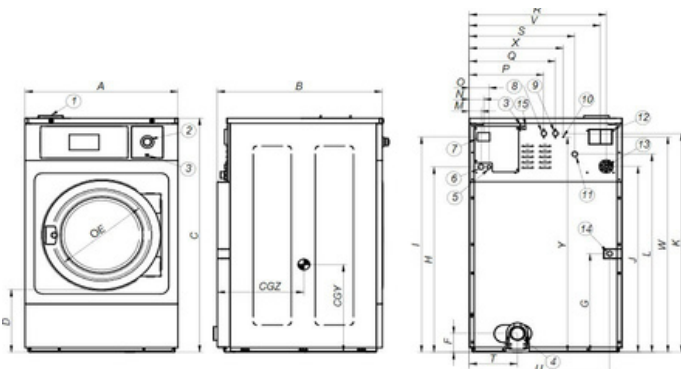
- Hard mounted washers.
- Anchoring to floor with anchoring base.
- Panels in skin plate.
- Drum and tub in stainless steel AISI 304.
- 3 water inlets (Water inlet hoses not included).
- CB and WRAS approved product Option ETL.

OPTIONS

- DQ-2 Dosing pump kit.
- Extra dosing pump DB-1.
- SLUICE: model with 8mm drum holes.
- Anchoring base.
- Double drain.
- Water inlet hose.
- Relay card with 6 extra dosing signals: up to 14 signals.
- Reversible door opening.
- Tropicalized coating.
- Steam kit to transform an E or HW heated machine into steam version.
- Stainless steel AISI 304 outer casing.
- Stainless steel AISI 304 front panel.
- Coin / token kit.
- Auto unlock kit for the door.
- Stainless steel AISI 304 outer casing.
- Front soap dispenser.

| DRUM | | U. | FWS - 135C TP2 | |
|---|--------------|-------------|----------------|-------------------|
| Load capacity 1:9 / 1:10 | | Lb. | 143.3 / 130.1 | |
| Volume | | CU.FT | 21.2 | |
| Diameter | | In | 41.3 | |
| Depth | | In | 26.9 | |
| GENERAL DETAILS | | | | |
| Washing speed / Spinning speed | | r.p.m. | 42,5 / 505 | |
| G Factor | | - | 150 | |
| Maximum force transmitted | | KN | 9.12 ±15 | |
| Frequency-dynamic force | | Hz | 6.93 | |
| Noise level | | dB | < 70 | |
| Coin laundry version | | - | YES | |
| Double drain | | - | OPT. | |
| Weighing System / Tilting System | | - | NO | |
| SLUICE option | | - | YES | |
| DOOR | | | | |
| Height center door / Height door | | In | 35.5 / 21.3 | |
| Diameter | | In | 22.1 | |
| POWER | | | | |
| Motor | | Hp | 7.4 | |
| Electric heating power | | kW | 36 | |
| Total electric power (electric model) | | kW | 38 | |
| Total electric power (hw, steam model) | | kW | 5.5 | |
| CONNECTIONS | | ELECTRIC | | STEAM / HOT WATER |
| Voltage 208-240/60/1~ + G | Nº x AWG / A | - | | - |
| Voltage 230/3~ + G | Nº x AWG / A | 4x 2 / 125A | | 4x 8 / 50A |
| Voltage 440-480/3 ~ + G | Nº x AWG / A | 4x 6 / 70A | | 4x 10/30A |
| Steam inlet (Steam model) | inch | 3/4" | | |
| Maximum steam consumption (Steam model) | lbs/h | 21 | | |
| Water inlet | inch | 1" | | |
| Water main pressure | Kg/cm2 | 2-4 | | |
| Maximum water consumption | Gal/h | 165.8** | | |
| Drain | mm/inch | 3" | | |
| Drainage capacity | Gal/min | 200 | | |
| DIMENSIONS / PACKING DIMENSIONS | | | | |
| Net Width / Gross Width | | In | 48.23 / 52.6 | |
| Net Depth / Gross Depth | | In | 57.77/ 56.7 | |
| Net Height / Gross Height | | In | 64.57 / 73.3 | |
| Net weight / Gross weight | | Lbs. | 1746.4 / 1936 | |
| Volume | | Ft3 | 21.1 | |

* Programmed No. 2, 100% load



- 01. Soap dispenser
- 02. Emergency stop
- 03. USB port
- 04. Drain
- 05. Electric connection to liquid soap pump
- 06. Electrical connection
- 07. Main switch
- 08. Auxiliary water inlet
- 09. Hot water inlet
- 10. Equipotential connection
- 11. Cold water inlet
- 12. Blur output / Water overload
- 13. Liquid soap connection
- 14. Steam connection
- 15. Ethernet port

| | A | B | C | D | E | F | G | H | I | J | K | L | M | N | O | P | Q | R | S | T | U | V | W | X | Y | CGY | CGZ | |
|----------|----|-------|-------|-------|-------|-------|------|-------|-------|-------|-------|-------|------|------|------|------|-------|-------|-------|-------|-------|-------|-------|-------|-------|-------|-------|-------|
| FWS-135C | mm | 1225 | 1315 | 1640 | 540 | 560 | 115 | 984 | 1368 | 1536 | 1306 | 1551 | 1318 | 61 | 74 | 101 | 651 | 731 | 1110 | 869 | 318 | 1163 | 1080 | 1470 | 992 | 1595 | 644 | 972 |
| | In | 48.23 | 51.77 | 64.57 | 21.26 | 22.05 | 4.53 | 38.74 | 53.86 | 60.47 | 51.42 | 61.65 | 1.89 | 2.40 | 2.91 | 3.98 | 25.63 | 28.78 | 43.70 | 34.21 | 12.52 | 45.79 | 42.52 | 57.87 | 39.06 | 62.80 | 25.35 | 38.27 |



WASHING

NORMAL SPIN WASHER EXTRACTORS HIGH CAPACITY FWS-180C TP2



FEATURES

Touch Plus Control

- 7" touchscreen, user friendly and totally programmable.
- Videos on display, ads, instructions.
- Free software for programming, telemetry, data analysis.
- USB Connection.
- 37 Languages.
- 8 dosing signals.

G FACTOR

- High G-Factor 150.

EFFICIENCY

- Energy Optimization.
- Optimal load.
- Low water consumption.

VERSATILITY

- Custom- Make to order.
- OPL or COIN.
- Electric or Hot water.
- Wet cleaning features.

CONNECTIVITY

- IoT - Fagor-Konnect standard.
- Remote technical service.
- Laundry Management system: OPL and COIN.

ERGONOMICS

- Big door diameter: Ø 560.
- Easy opening/closing system for door lock.

MAINTENANCE

- Hinged panel: easy and ergonomic access.
- Equivalent parts for all models: contactors, electronic devices,...
- Technical menu: telemetry, error diagnosis.

OTHERS

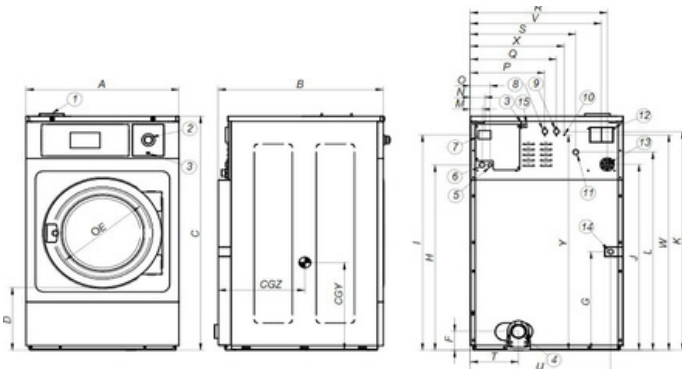
- Hard mounted washers.
- Anchoring to floor with anchoring base.
- Panels in skin plate.
- Drum and tub in stainless steel AISI 304.
- 3 water inlets (Water inlet hoses not included).
- CB and WRAS approved product Option ETL.

OPTIONS

- DQ-2 Dosing pump kit.
- Extra dosing pump DB-1.
- SLUICE: model with 0.31 In drum holes.
- Anchoring base.
- Double drain.
- Water inlet hose.
- Relay card with 6 extra dosing signals: up to 14 signals.
- Reversible door opening.
- Tropicalized coating.
- Steam kit to transform an E or HW heated machine into steam version.
- Stainless steel AISI 304 outer casing.
- Stainless steel AISI 304 front panel.
- Coin / token kit.
- Auto unlock kit for the door.
- Stainless steel AISI 304 outer casing.
- Front soap dispenser.

| DRUM | | U. | FWS - 180C TP2 |
|---|--------------|-------------|-------------------|
| Load capacity 1:9 / 1:10 | | Lb. | 187.4/169.8 |
| Volume | | CU.FT | 28.2 |
| Diameter | | In | 41.3 |
| Depth | | In | 36.9 |
| GENERAL DETAILS | | | |
| Washing speed / Spinning speed | | r.p.m. | 42.5 / 505 |
| G Factor | | - | 150 |
| Maximum force transmitted | | KN | 10.17 ±15 |
| Frequency-dynamic force | | Hz | 6.93 |
| Noise level | | dB | < 70 |
| Coin laundry version | | - | YES |
| Double drain | | - | OPT. |
| Weighing System / Tilting System | | - | NO |
| SLUICE option | | - | YES |
| DOOR | | | |
| Height center door / Height door | | In | 35.5 / 21.3 |
| Diameter | | In | 22.1 |
| POWER | | | |
| Motor | | Hp | 7.4 |
| Electric heating power | | kW | 48/36*** |
| Total electric power (electric model) | | kW | 50.5/38.5*** |
| Total electric power (hw, steam model) | | kW | 7.5 |
| CONNECTIONS | | ELECTRIC | STEAM / HOT WATER |
| Voltage 208-240/60/1~ + G | N° x AWG / A | - | - |
| Voltage 230/3~ + G | N° x AWG / A | 4x 2 / 125A | 4x 8 / 50A |
| Voltage 440-480/3 ~ + G | N° x AWG / A | 4x 6 / 70A | 4x 10/30A |
| Steam inlet (Steam model) | inch | | 3/4" |
| Maximum steam consumption (Steam model) | lbs/h | | 21 |
| Water inlet | inch | | 1" |
| Water main pressure | Kg/cm2 | | 2-4 |
| Maximum water consumption | Gal/h | | 215** |
| Drain | mm/inch | | 3" |
| Drainage capacity | Gal/min | | 52.8 |
| DIMENSIONS / PACKING DIMENSIONS | | | |
| Net Width / Gross Width | | In | 48.23 / 52.6 |
| Net Depth / Gross Depth | | In | 58.85/ 65.4 |
| Net Height / Gross Height | | In | 64.57 / 73.3 |
| Net weight / Gross weight | | Lbs. | 1920.6 / 2123.4 |
| Volume | | Ft3 | 145.5 |

* Programmed No. 2, 100% load



- 01. Soap dispenser
- 02. Emergency stop
- 03. USB port
- 04. Drain
- 05. Electric connection to liquid soap pump
- 06. Electrical connection
- 07. Main switch
- 08. Auxiliary water inlet
- 09. Hot water inlet
- 10. Equipotential connection
- 11. Cold water inlet
- 12. Blur output / Water overload
- 13. Liquid soap connection
- 14. Steam connection
- 15. Ethernet port

| | A | B | C | D | E | F | G | H | I | J | K | L | M | N | O | P | Q | R | S | T | U | V | W | X | Y | CGY | CGZ | |
|----------|----|-------|-------|-------|-------|-------|------|-------|-------|-------|-------|-------|-------|------|------|------|-------|-------|-------|-------|-------|-------|-------|-------|-------|-------|-------|-------|
| FWS-180C | mm | 1225 | 1492 | 1640 | 540 | 560 | 115 | 984 | 1368 | 1536 | 1306 | 1551 | 1318 | 61 | 74 | 101 | 651 | 731 | 1110 | 869 | 318 | 1163 | 1080 | 1470 | 992 | 1595 | 644 | 750 |
| | In | 48.23 | 58.74 | 64.57 | 21.26 | 22.05 | 4.53 | 38.74 | 53.86 | 60.47 | 51.42 | 61.06 | 51.89 | 2.40 | 2.91 | 3.98 | 25.63 | 28.78 | 43.70 | 34.21 | 12.52 | 45.79 | 42.52 | 57.87 | 39.06 | 62.80 | 25.35 | 29.53 |